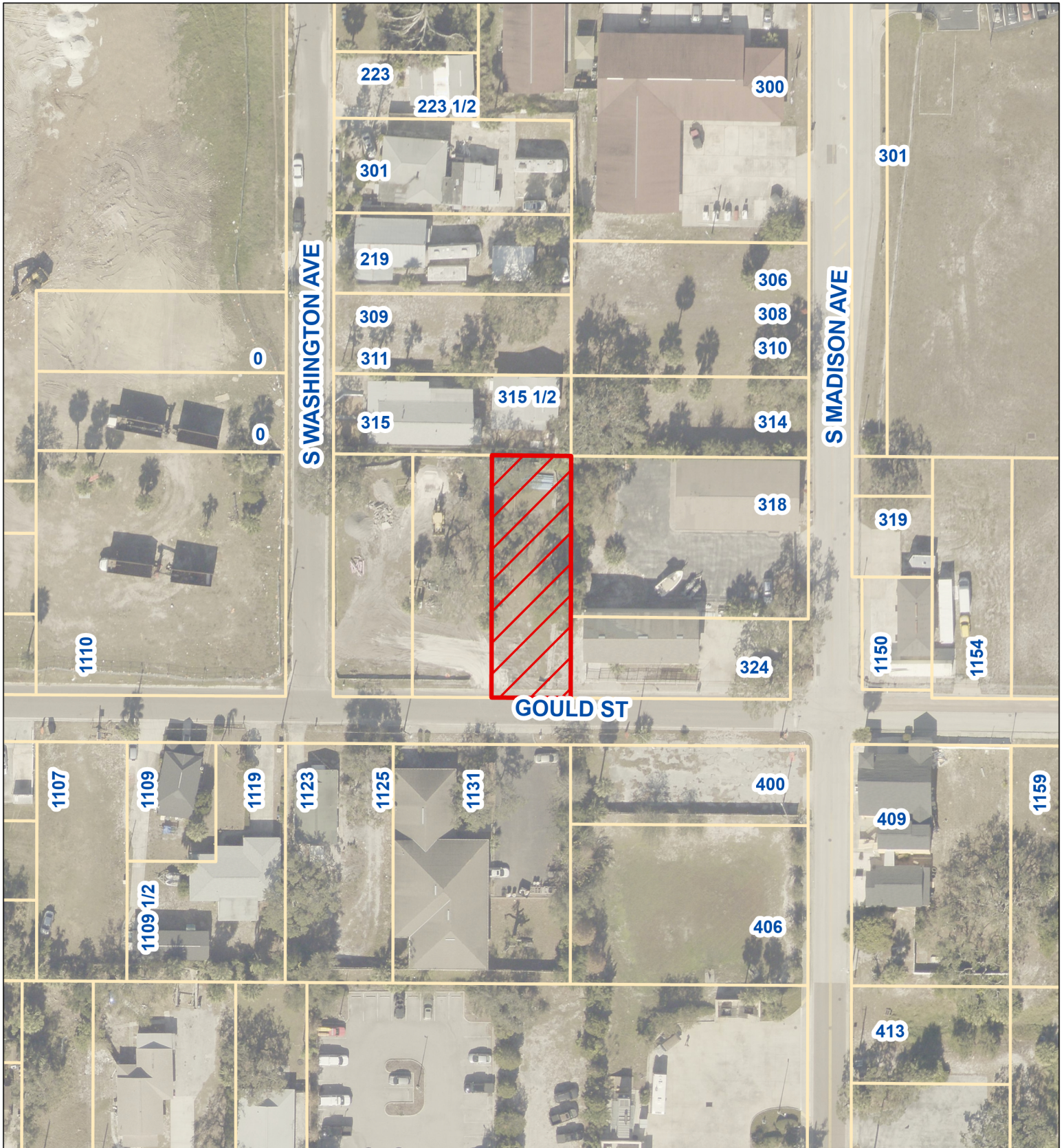
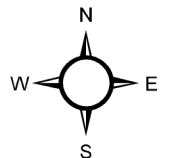


# AERIAL MAP



**Address: Unaddressed Gould St., Clearwater, FL 33756**  
**Parcel ID No.: 15-29-15-21690-000-0190**



Scale: N.T.S.



Prepared by:  
 Department of Public Works - Engineering  
 Geographic Technology Division  
 100 S. Myrtle Ave., Clearwater, FL 33756  
 Ph: (727)562-4750, Fax: (727)526-4755  
[www.MyClearwater.com](http://www.MyClearwater.com)

Map Gen By: MD

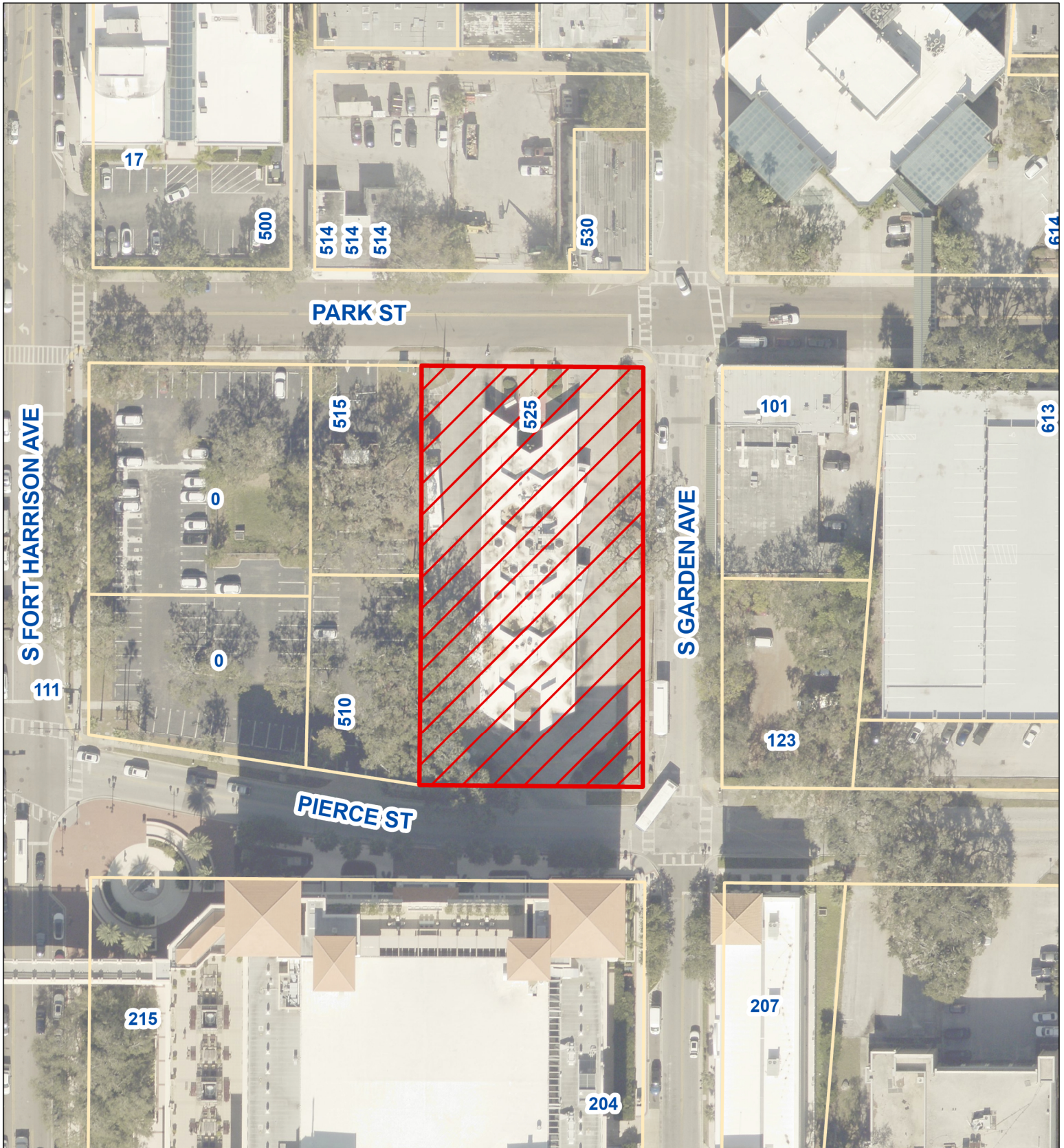
Reviewed By: AA

Aerial Flown 2025

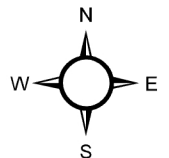
Date: 5/15/2026

Page 1 of 13

# AERIAL MAP



**Address: 525 Park St., Clearwater, FL 33756**  
**Parcel ID No.: 16-29-15-32292-005-0070**



Scale: N.T.S.



Prepared by:  
 Department of Public Works - Engineering  
 Geographic Technology Division  
 100 S. Myrtle Ave., Clearwater, FL 33756  
 Ph: (727)562-4750, Fax: (727)526-4755  
[www.MyClearwater.com](http://www.MyClearwater.com)

Map Gen By: MD

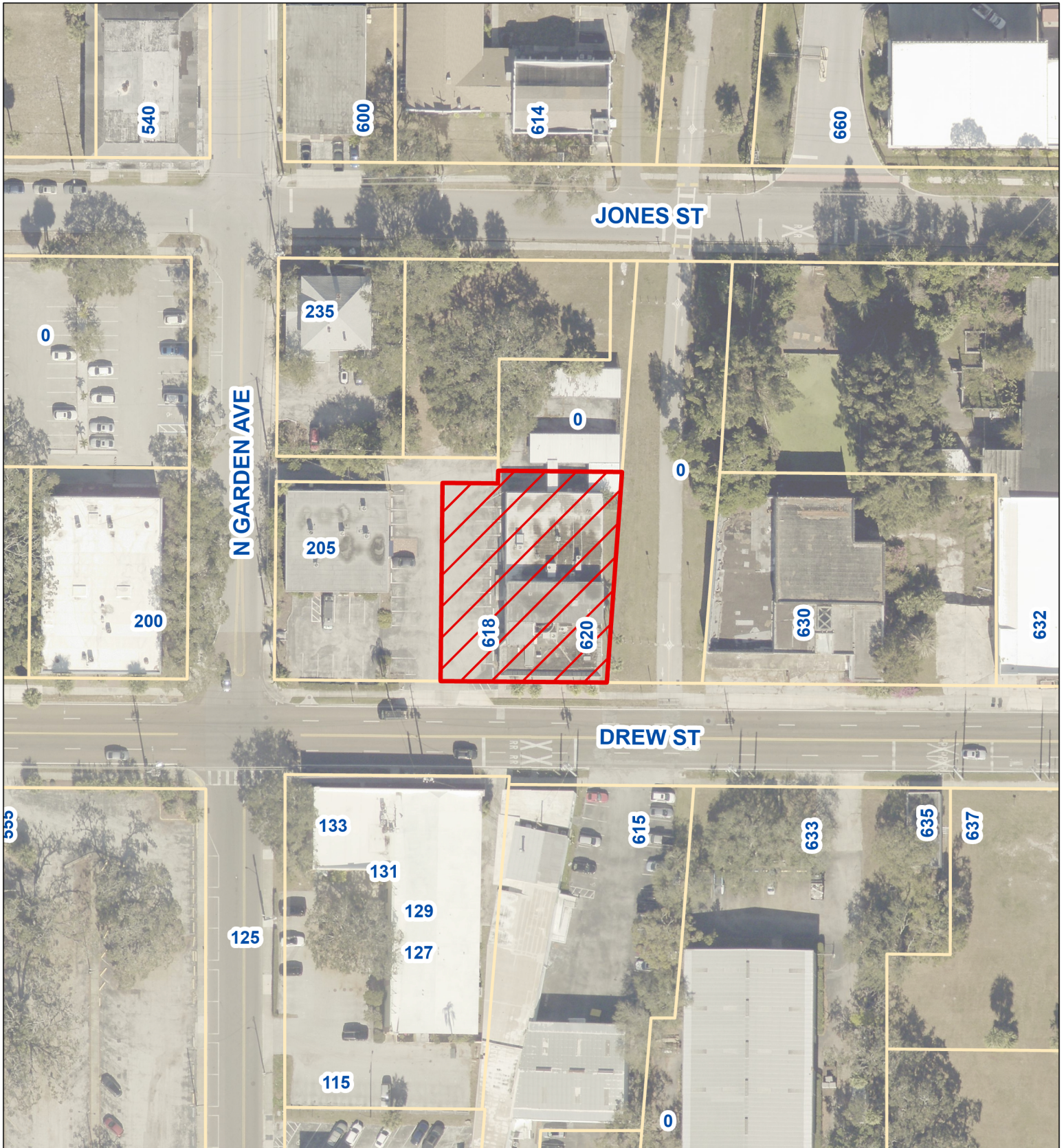
Reviewed By: AA

Aerial Flown 2025

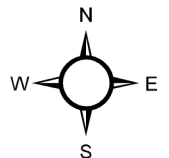
Date: 5/15/2026

Page 2 of 13

# AERIAL MAP



**Address: 618 Drew St., Clearwater, FL 33755**  
**Parcel ID No.: 09-29-15-44352-006-0030**



Prepared by:  
Department of Public Works - Engineering  
Geographic Technology Division  
100 S. Myrtle Ave., Clearwater, FL 33756  
Ph: (727)562-4750, Fax: (727)526-4755  
[www.MyClearwater.com](http://www.MyClearwater.com)

Map Gen By: MD

Reviewed By: AA

Aerial Flown 2025

Date: 5/15/2026

Page 3 of 13

Scale: N.T.S.

# AERIAL MAP



Prepared by:  
 Department of Public Works - Engineering  
 Geographic Technology Division  
 100 S. Myrtle Ave., Clearwater, FL 33756  
 Ph: (727)562-4750, Fax: (727)526-4755  
[www.MyClearwater.com](http://www.MyClearwater.com)

**Address: Unaddressed N Garden Ave., Clearwater, FL  
 33755**

**Parcel ID No.: 09-29-15-44352-006-0050**

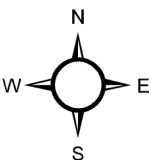
Map Gen By: MD

Reviewed By: AA

Aerial Flown 2025

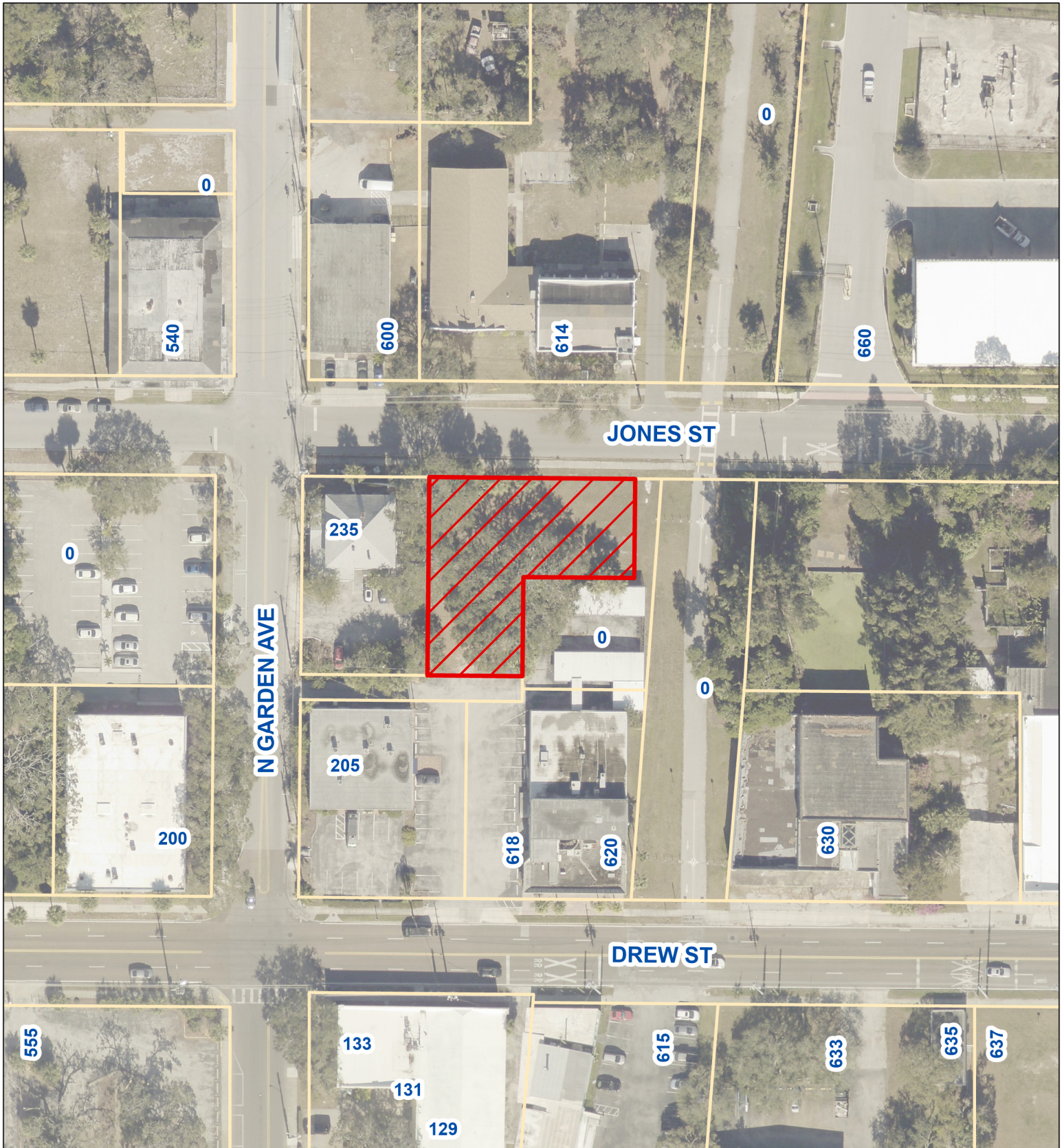
Date: 5/15/2026

Page 4 of 13



Scale: N.T.S.

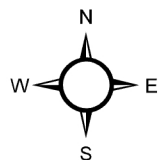
# AERIAL MAP



Prepared by:  
 Department of Public Works - Engineering  
 Geographic Technology Division  
 100 S. Myrtle Ave., Clearwater, FL 33756  
 Ph: (727)562-4750, Fax: (727)526-4755  
[www.MyClearwater.com](http://www.MyClearwater.com)

**Address: Unaddressed N Garden Ave., Clearwater, FL  
 33755**

**Parcel ID No.: 09-29-15-44352-006-0070**



Scale: N.T.S.

Map Gen By: MD

Reviewed By: AA

Aerial Flown 2025

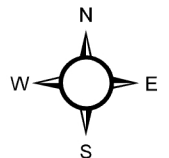
Date: 5/15/2026

Page 5 of 13

# AERIAL MAP



**Address: Unaddressed Gould St., Clearwater, FL 33756**  
**Parcel ID No.: 15-29-15-21690-000-0200**



Scale: N.T.S.



Prepared by:  
 Department of Public Works - Engineering  
 Geographic Technology Division  
 100 S. Myrtle Ave., Clearwater, FL 33756  
 Ph: (727)562-4750, Fax: (727)526-4755  
[www.MyClearwater.com](http://www.MyClearwater.com)

Map Gen By: MD

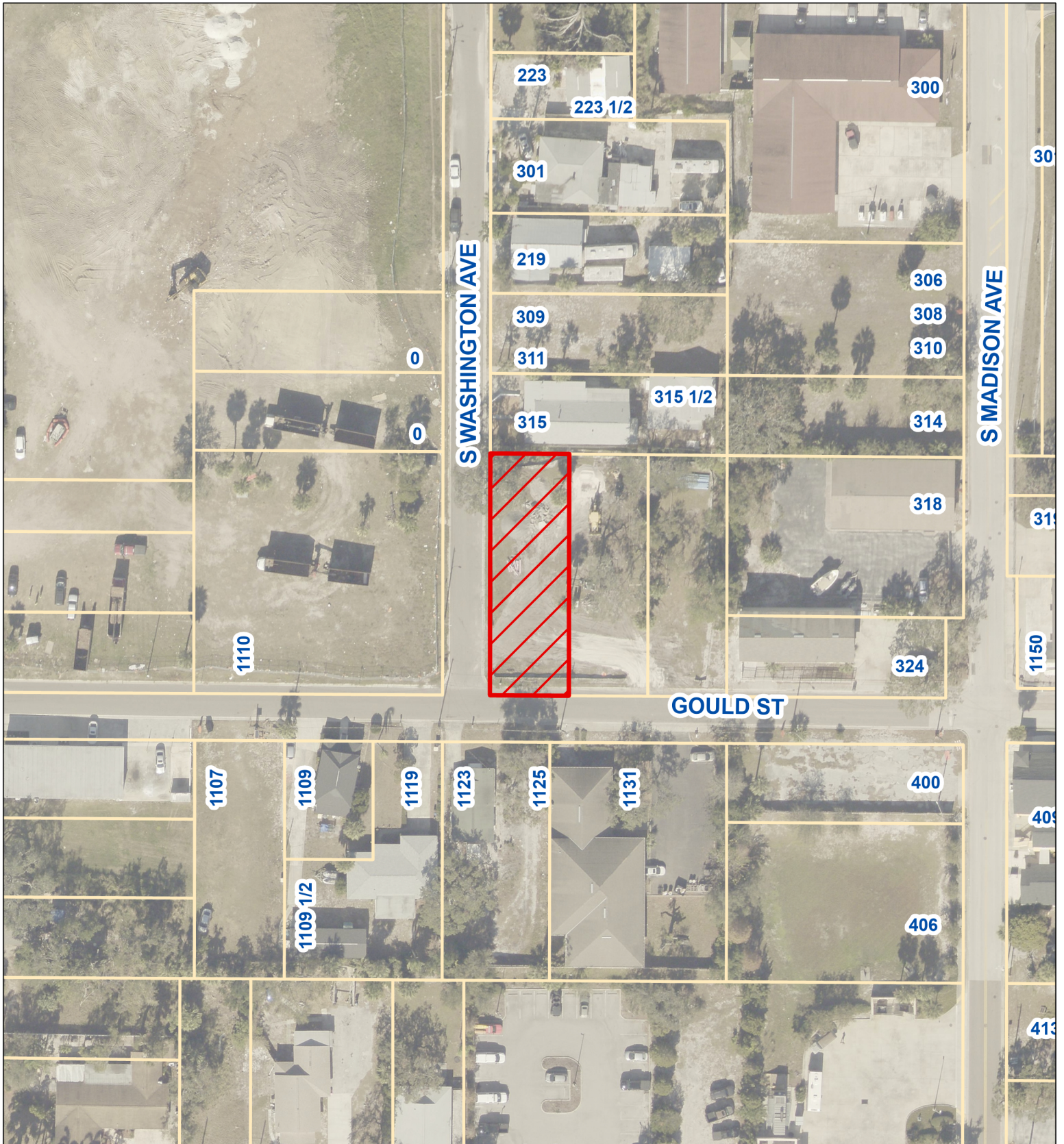
Reviewed By: AA

Aerial Flown 2025

Date: 5/15/2026

Page 6 of 13

# AERIAL MAP



Prepared by:  
 Department of Public Works - Engineering  
 Geographic Technology Division  
 100 S. Myrtle Ave., Clearwater, FL 33756  
 Ph: (727)562-4750, Fax: (727)526-4755  
[www.MyClearwater.com](http://www.MyClearwater.com)

**Address: Unaddressed Washington Ave., Clearwater, FL  
 33756**

**Parcel ID No.: 15-29-15-21690-000-0210**

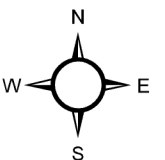
Map Gen By: MD

Reviewed By: AA

Aerial Flown 2025

Date: 5/15/2026

Page 7 of 13



Scale: N.T.S.

# AERIAL MAP



Prepared by:  
 Department of Public Works - Engineering  
 Geographic Technology Division  
 100 S. Myrtle Ave., Clearwater, FL 33756  
 Ph: (727)562-4750, Fax: (727)526-4755  
[www.MyClearwater.com](http://www.MyClearwater.com)

**Address: Unaddressed S Madison Ave., Clearwater, FL  
 33756**

**Parcel ID No.: 15-29-15-65214-005-0131**

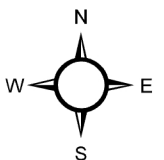
Map Gen By: MD

Reviewed By: AA

Aerial Flown 2025

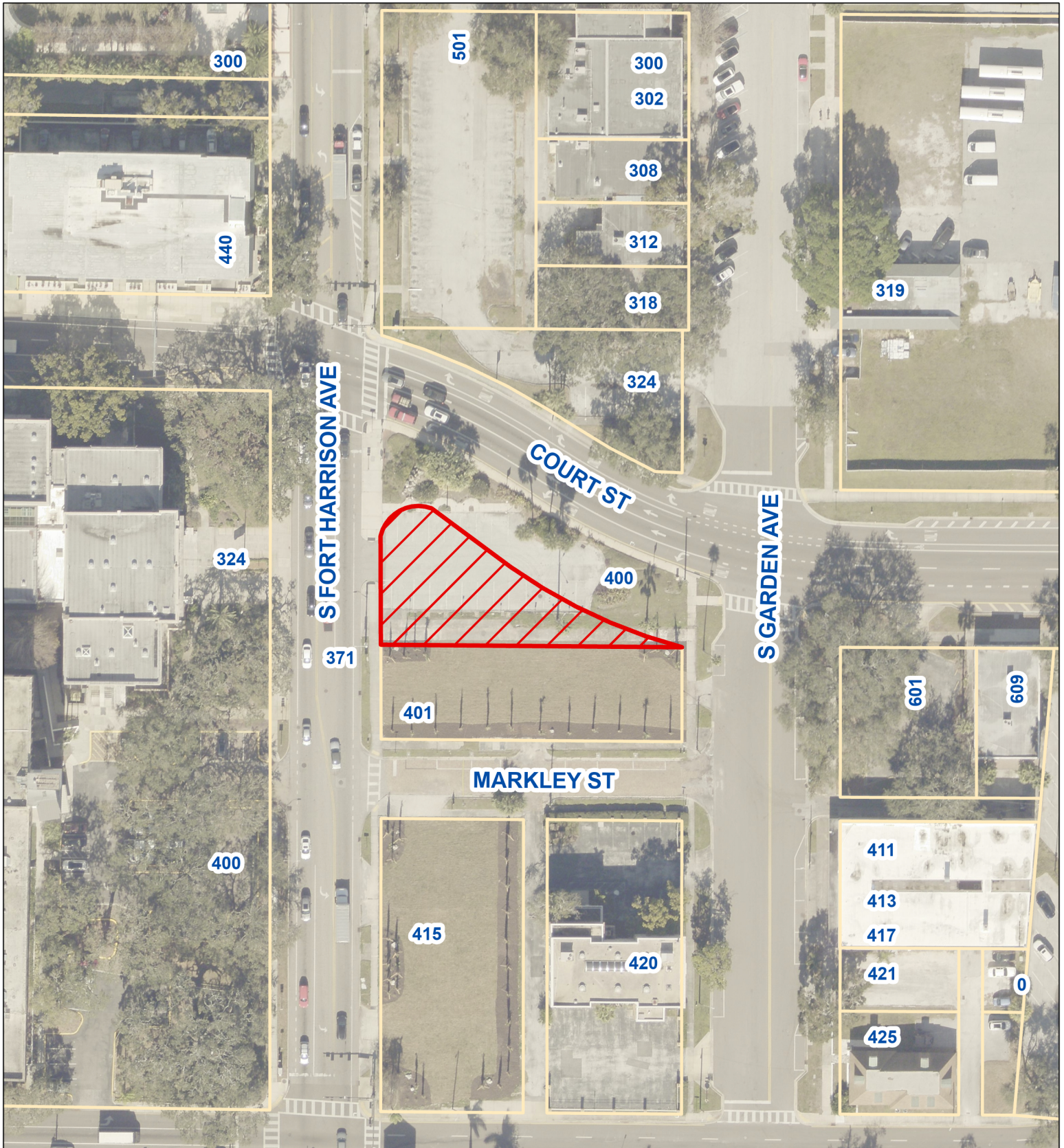
Date: 5/15/2026

Page 8 of 13



Scale: N.T.S.

# AERIAL MAP



Prepared by:  
 Department of Public Works - Engineering  
 Geographic Technology Division  
 100 S. Myrtle Ave, Clearwater, FL 33756  
 Ph: (727)562-4750, Fax: (727)526-4755  
[www.MyClearwater.com](http://www.MyClearwater.com)

**Address: Unaddressed S Ft Harrison Ave., Clearwater,  
 FL 33756**

**Parcel ID No.: 16-29-15-18648-000-0520**

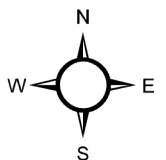
Map Gen By: MD

Reviewed By: AA

Aerial Flown 2025

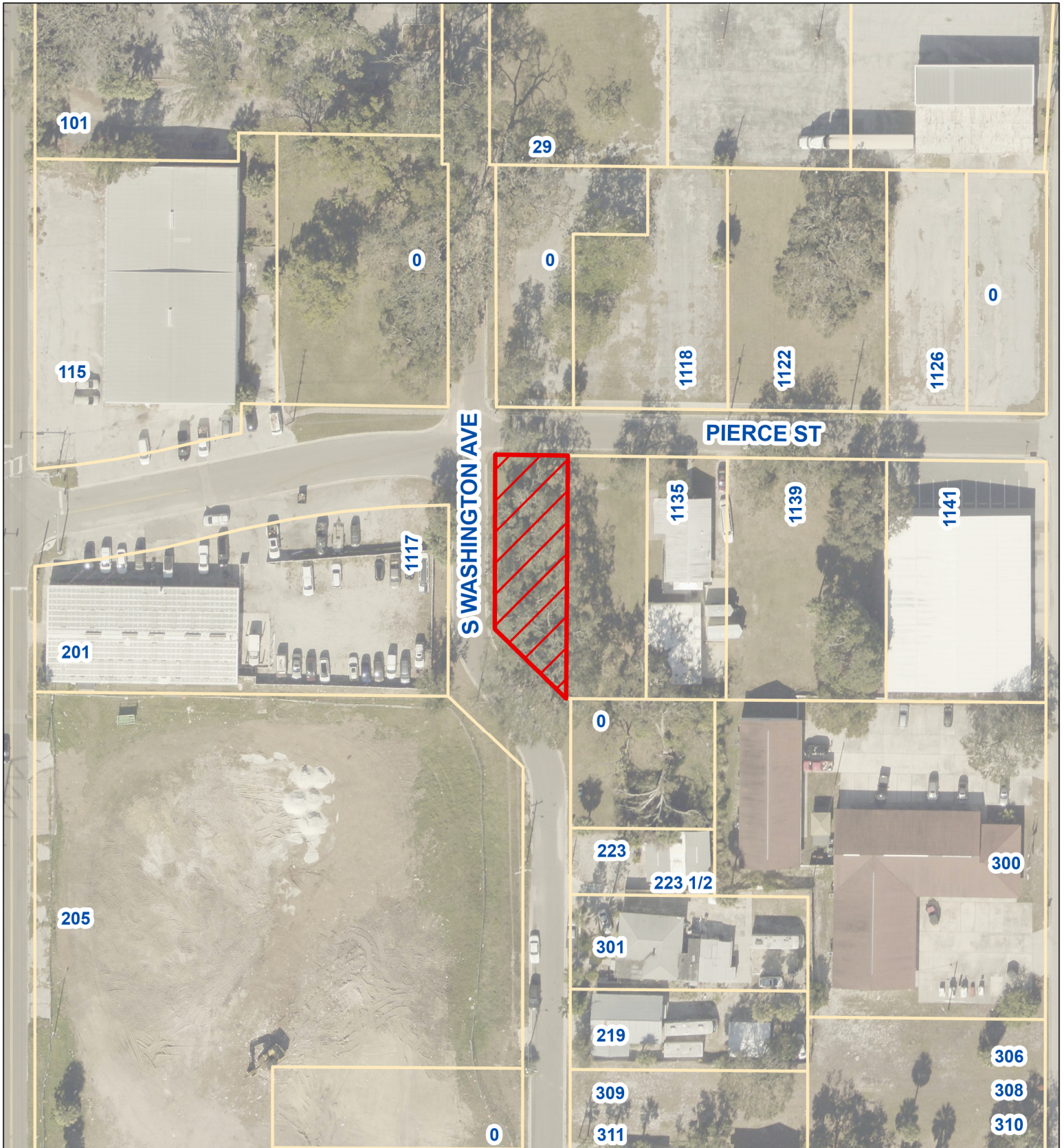
Date: 5/15/2026

Page 9 of 13



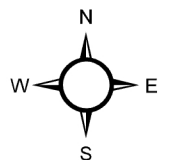
Scale: N.T.S.

# AERIAL MAP



Prepared by:  
 Department of Public Works - Engineering  
 Geographic Technology Division  
 100 S. Myrtle Ave., Clearwater, FL 33756  
 Ph: (727)562-4750, Fax: (727)526-4755  
[www.MyClearwater.com](http://www.MyClearwater.com)

**Address: Unaddressed Pierce St., Clearwater, FL 33755**  
**Parcel ID No.: 15-29-15-65214-002-0080**



Scale: N.T.S.

Map Gen By: MD

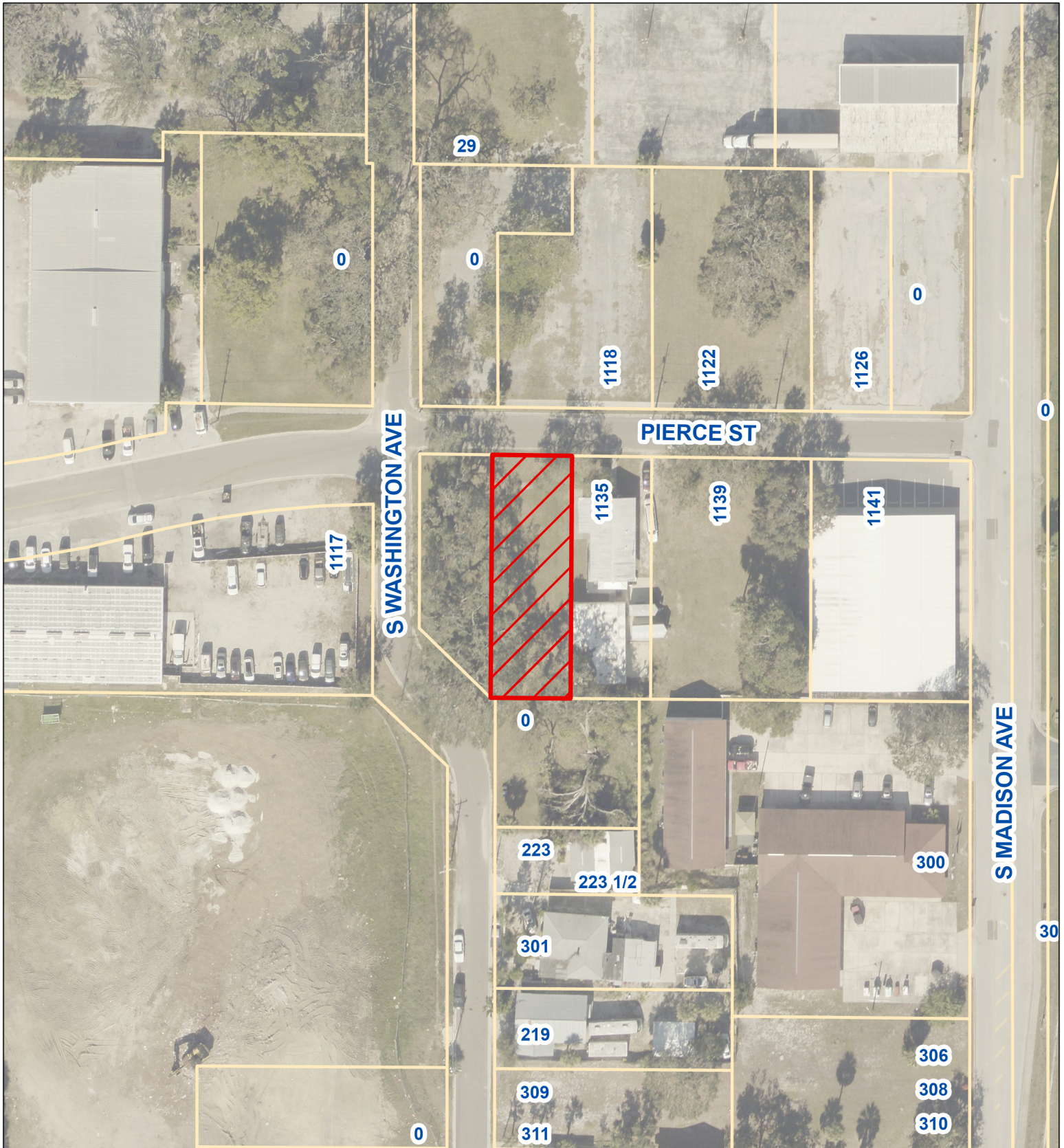
Reviewed By: AA

Aerial Flown 2025

Date: 5/15/2026

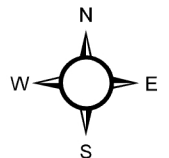
Page 10 of 13

# AERIAL MAP



Prepared by:  
 Department of Public Works - Engineering  
 Geographic Technology Division  
 100 S. Myrtle Ave, Clearwater, FL 33756  
 Ph: (727)562-4750, Fax: (727)526-4755  
[www.MyClearwater.com](http://www.MyClearwater.com)

**Address: Unaddressed Pierce St., Clearwater, FL 33755**  
**Parcel ID No.: 15-29-15-65214-002-0090**



Scale: N.T.S.

Map Gen By: MD

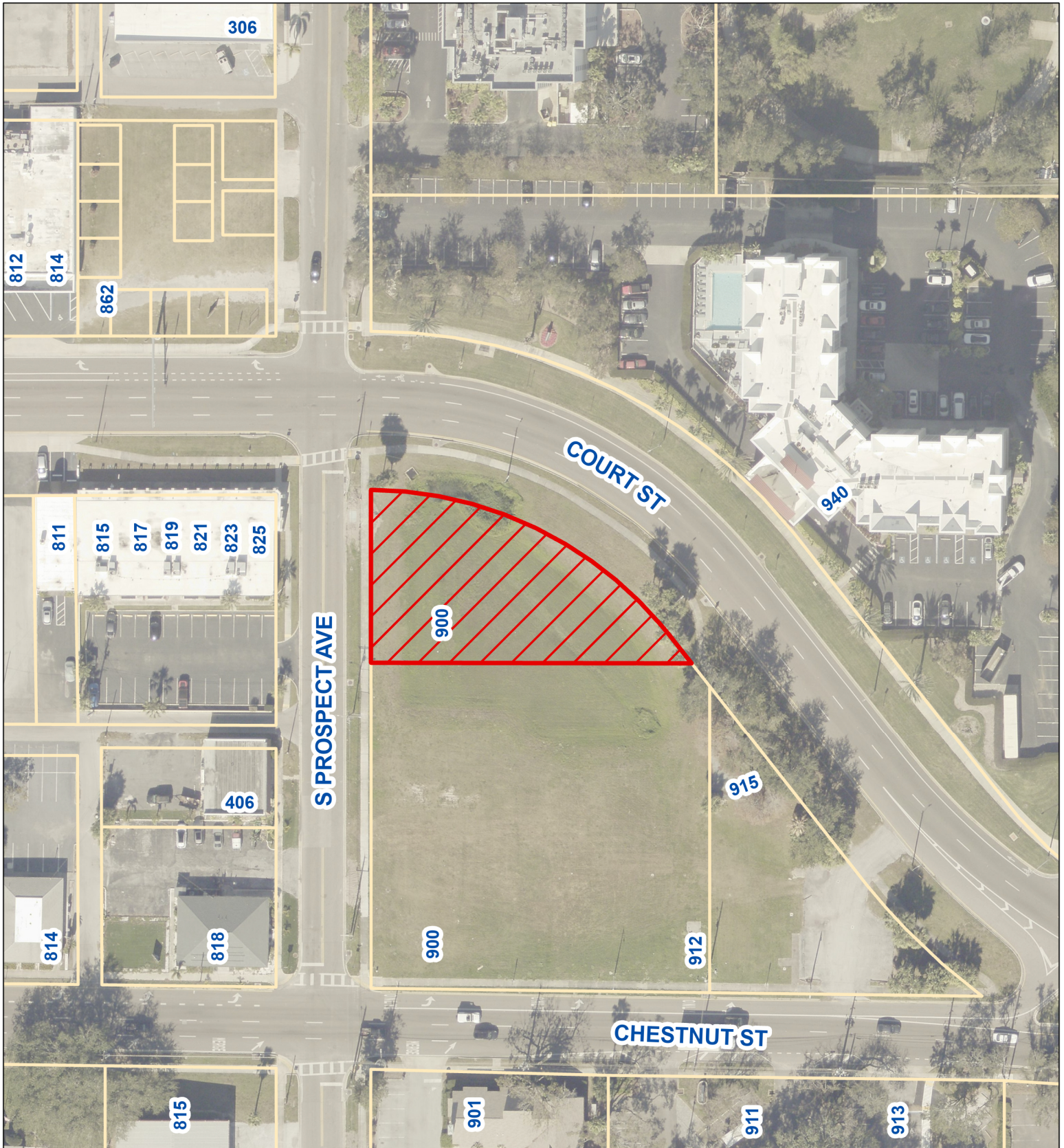
Reviewed By: AA

Aerial Flown 2025

Date: 5/15/2026

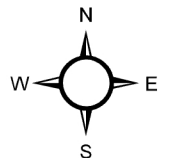
Page 11 of 13

# AERIAL MAP



**Address: Unaddressed Chestnut St., Clearwater, FL  
33756**

**Parcel ID No.: 15-29-15-16830-003-0040**



Scale: N.T.S.



Prepared by:  
Department of Public Works - Engineering  
Geographic Technology Division  
100 S. Myrtle Ave, Clearwater, FL 33756  
Ph: (727)562-4750, Fax: (727)526-4755  
www.MyClearwater.com

Map Gen By: MD

Reviewed By: AA

Aerial Flown 2025

Date: 5/15/2026

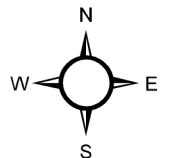
Page 12 of 13

# AERIAL MAP



Prepared by:  
 Department of Public Works - Engineering  
 Geographic Technology Division  
 100 S. Myrtle Ave., Clearwater, FL 33756  
 Ph: (727)562-4750, Fax: (727)526-4755  
[www.MyClearwater.com](http://www.MyClearwater.com)

**Address: Unaddressed Court St., Clearwater, FL 33756**  
**Parcel ID No.: 15-29-15-16830-003-0070**



Scale: N.T.S.

Map Gen By: MD

Reviewed By: AA

Aerial Flown 2025

Date: 5/15/2026

Page 13 of 13