



Median Landscaping



Street Festival



District Gateway



Postcard Mural



Cafe Dining



Street Parking



Food Festival



District Directory



Community Trails



Street Signage



Banner Program



Performance Area

Dunedin FL



Festival Settings



Performance Areas



Boardwalk Pavilion



Parallel Street Parking



Boardwalk Settings



Banner Program



Landscape Feature



Destination Hospitality



Street Scene



Destination Dining



Monumental Signage



Street Signage

Safety Harbor FL

City of Clearwater | East Gateway District



Cafe Dining



Sidewalk Retail



Gateway Structure



Cafe Dining



Architectural Heritage



Texture Variations



Water Feature



Vegetable Market



Potted Planting



Streetscaping



Festival Settings



Floral Market

Winter Park FL

City of Clearwater | East Gateway District



Water Feature



Park Settings



Festival Setting



Mixed Use Development



Plazas



Street Tree Canopy



Art Shows



Transit Stop



Court Yards



Theaters



Department Stores



Independent Retailers

Hyde Park Village, Tampa FL

City of Clearwater | East Gateway District



District Parking Street



Water Features



Art Features



Performance Areas



Urban Arbors



Bollards



Shade Forms



Shade Forms



Cafe Dining



Sidewalk Umbrellas



Cafe Dining



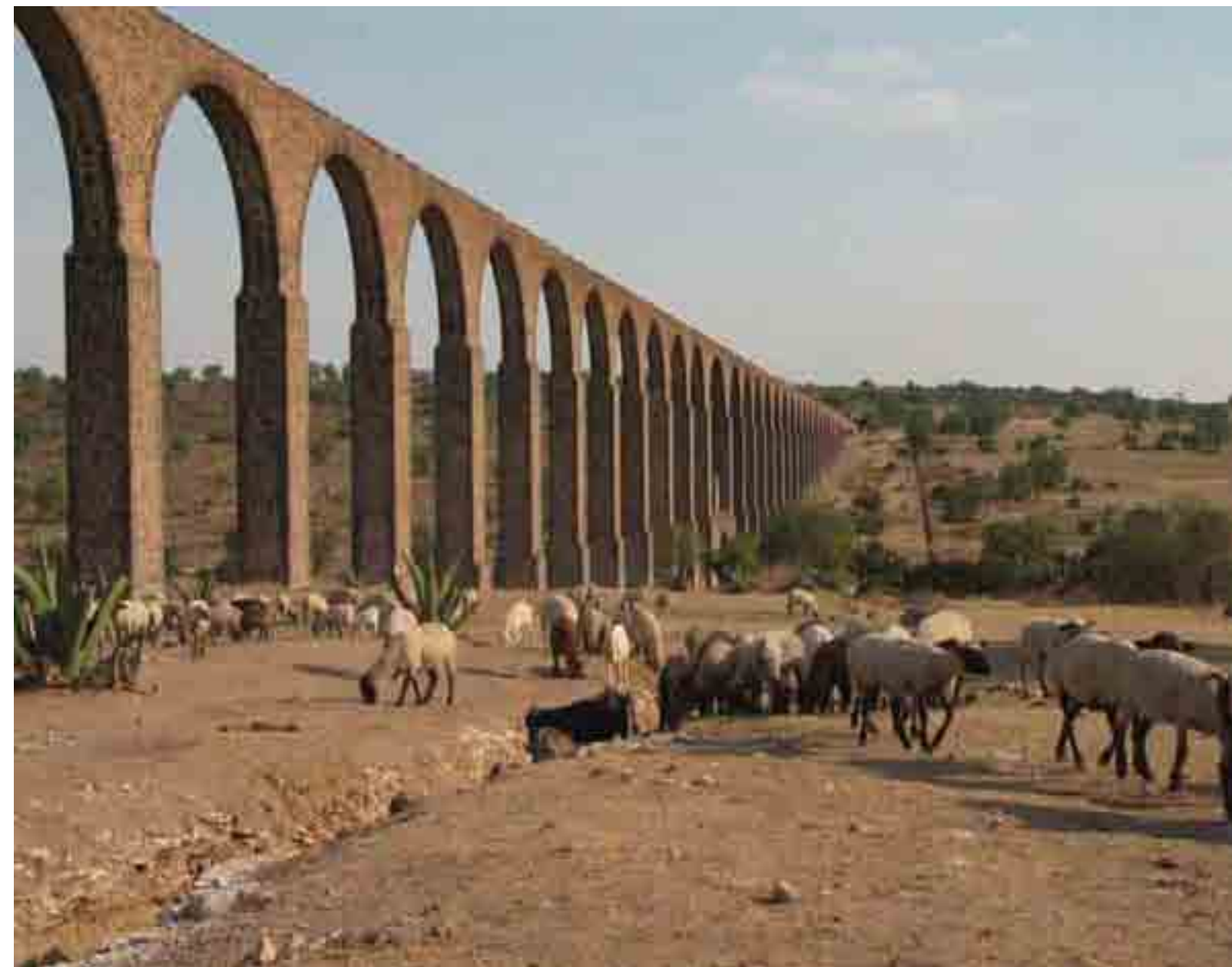
Median Landscaping

Lincoln Road, Miami FL

City of Clearwater | East Gateway District



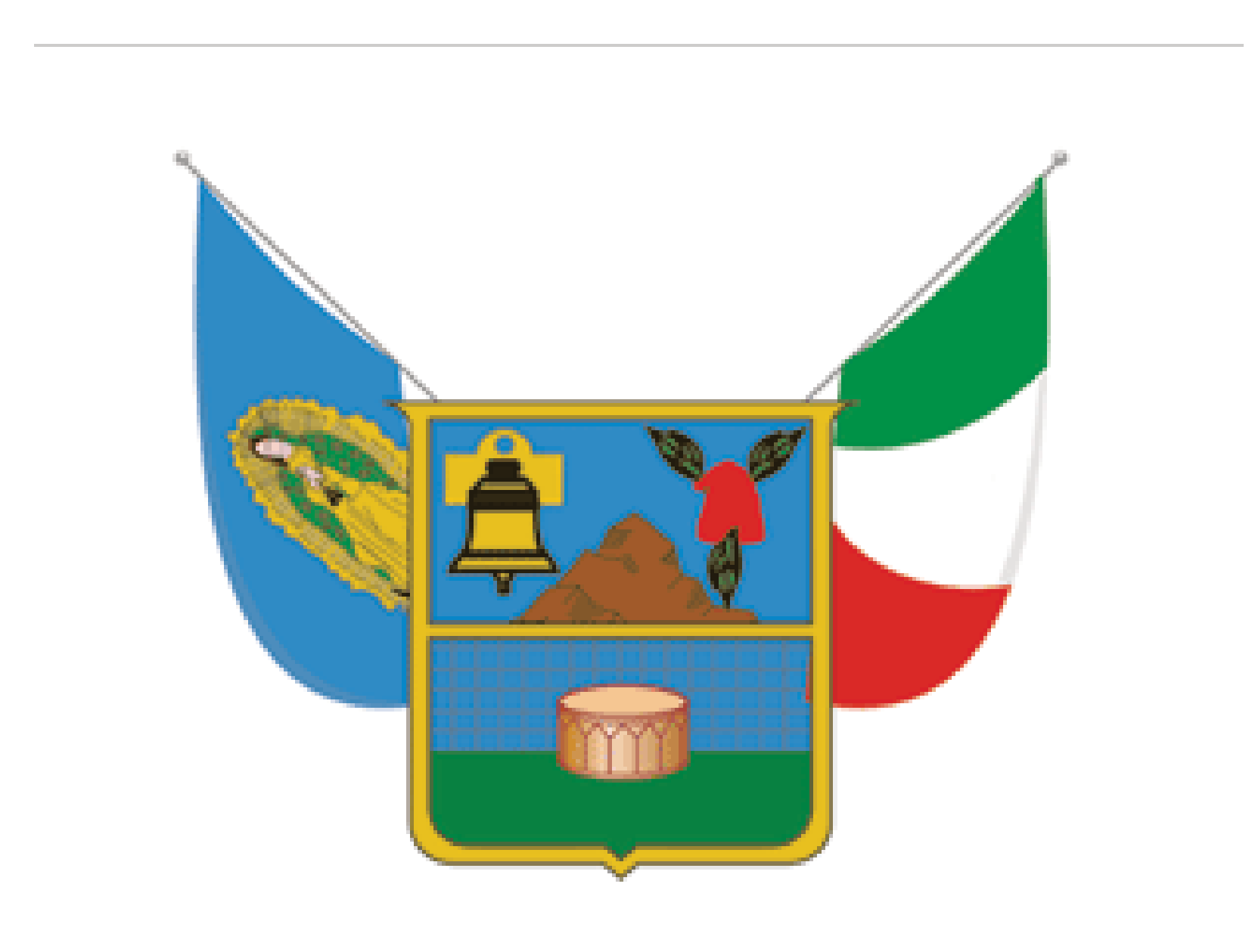
Maguey Plant



Zempoala Aquaduct



Dolores



Flag



Tula Ruins



Native Art



Art Talaver Frog



Cuisine



Historic Ruins



Tivoli Lighting



Architectural Form & Color



Clay Pottery

Hidalgo, Mexico

City of Clearwater | East Gateway District



Deck Pattern



Wood Boardwalk



Gravel Trail



Glenn Oaks Trail



Wood Bridge



Glenn Oaks Bridge



Wood Trail



Suspension Bridge



Truss Bridge



Lighted Bridge



Canal Bridge



Metal Frame & Concrete Bridge

Pedestrian, Bridges and Boardwalks



Plot Layouts



Raised Gardens



Mature Garden



Harvest Time



Produce



Floral Gardens



Floral Trellis



Vegetables



Community Bonds



Sweat Equity



School Programs



Development Plans

Community Gardens



Water Curtain



Water Projection Art



Water Sculpture



Water Curtain Color



Banner Shades



Tent Structure



Shade Structure



Urban Arbor



Park Signage



Viewing Deck



Water Fountains



Seating Area

Parks - Shade - Water



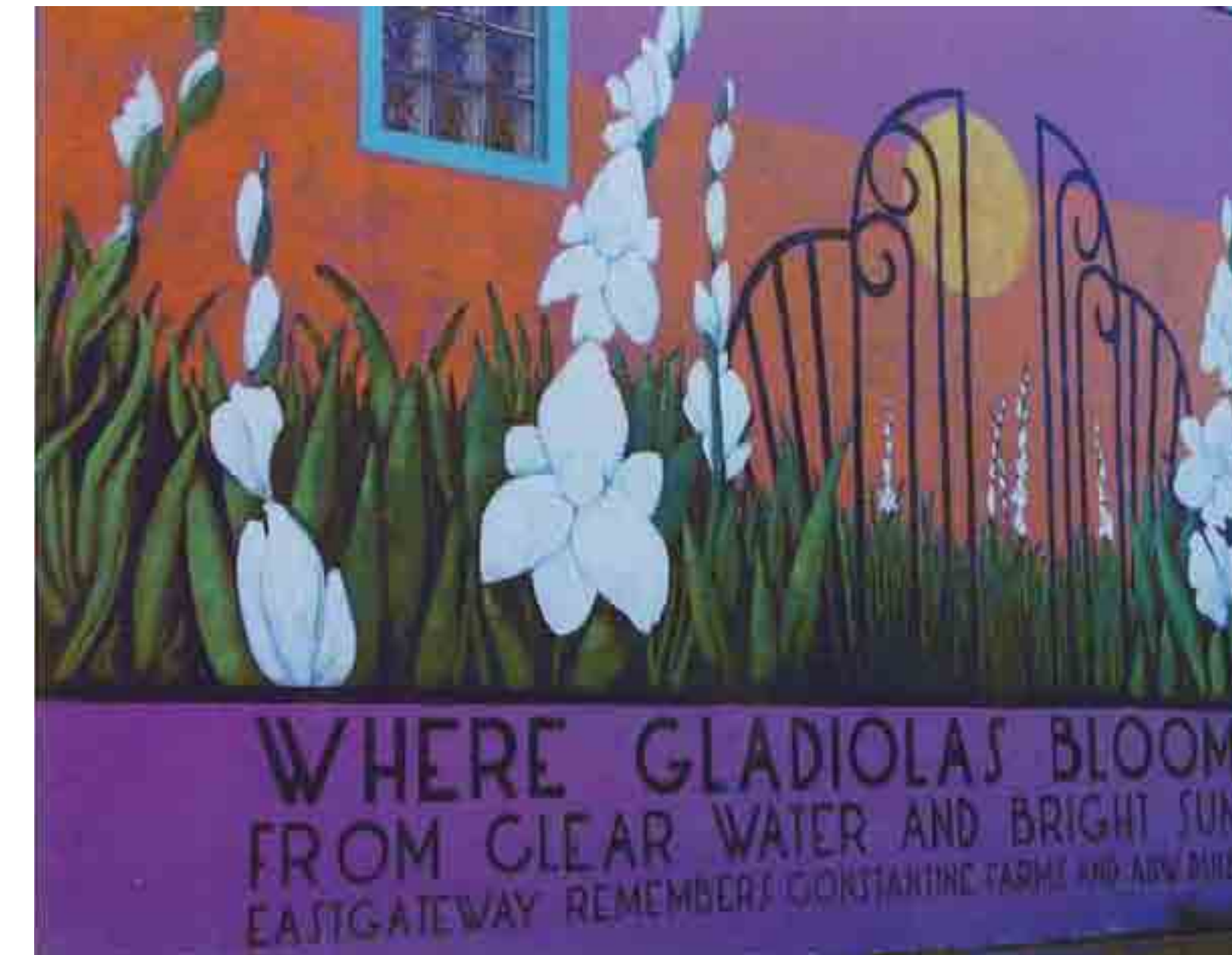
Fraternal Order of the Eagles



First There Were Springs of Clear Water 2010



Mexican Diana 2010



Where Gladiolus Bloom 2010



Sea Life Painting



Tropical Mural



Welcome to Dogedin, Dunedin, FL



Vintage Car



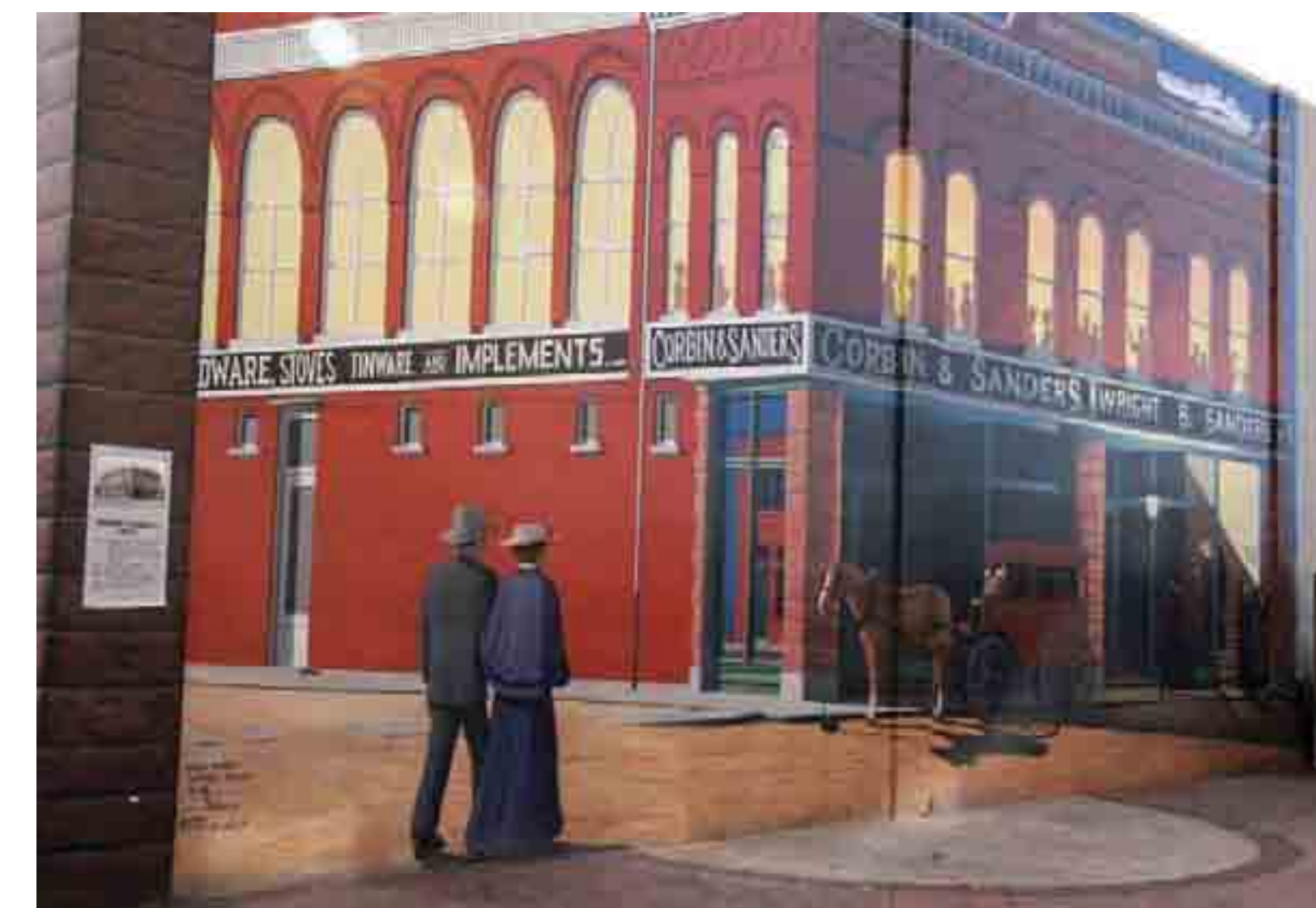
Color and the Streetscape



Bright Colors



Lettering and Way finding



Vintage Town

Building Murals



Opportunities in the East Gateway



After



Before - Tarrant County Court-house, Ft Worth, TX



After



Before - P.S.E. & G. Electric Sub-station, New Brunswick, NJ



After



Before - 15 Centre Theater, Milwaukee, WI

Richard Haas - Building Murals

City of Clearwater | East Gateway District



Electronics



Unlimited Locations



Beachwear



Marketing



High Fashion



Recruiting



Boutique Gifts



Sports Apparel



Apparel



Mobile Interiors

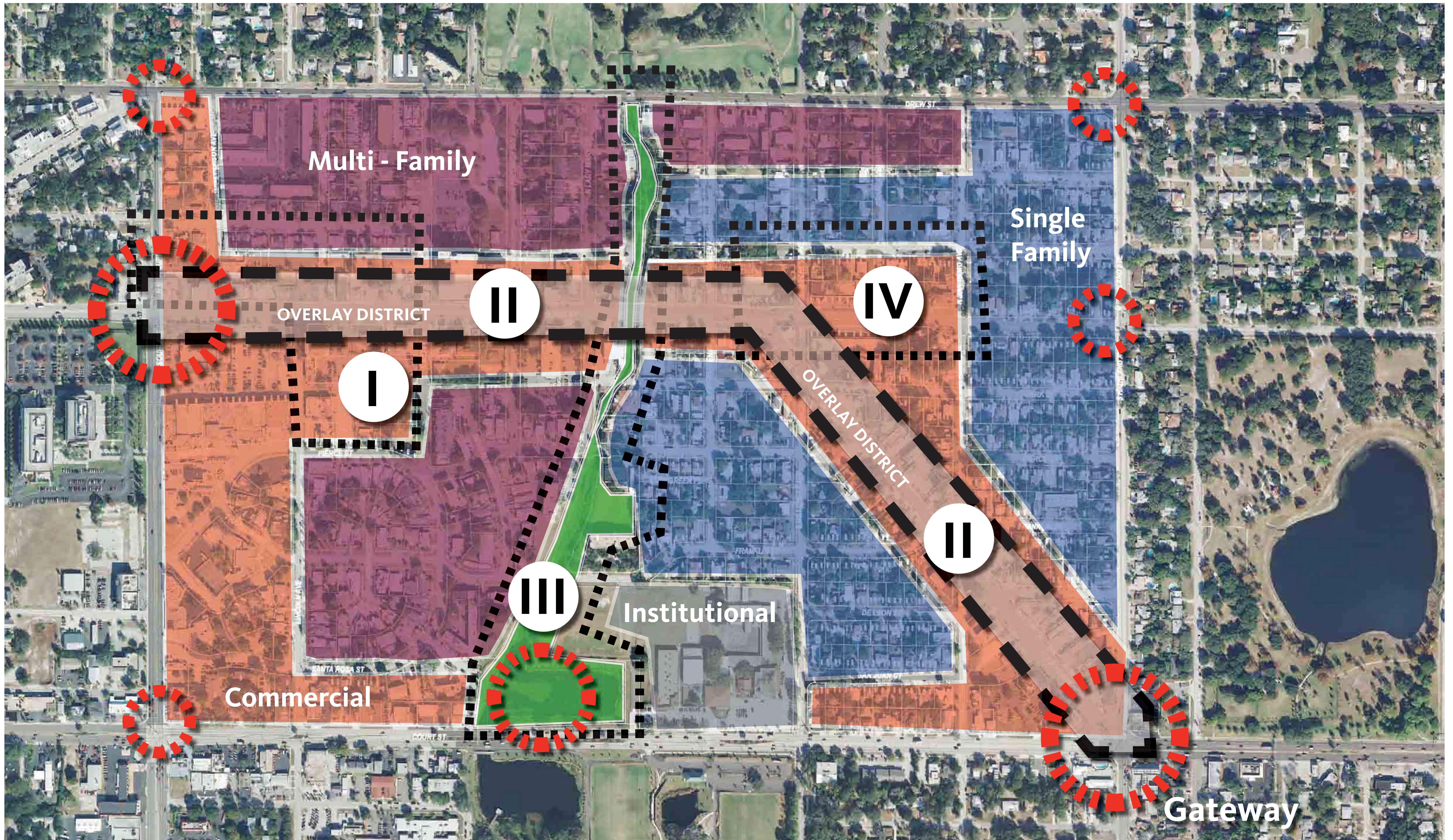


Arts & Crafts



Team Merchandise

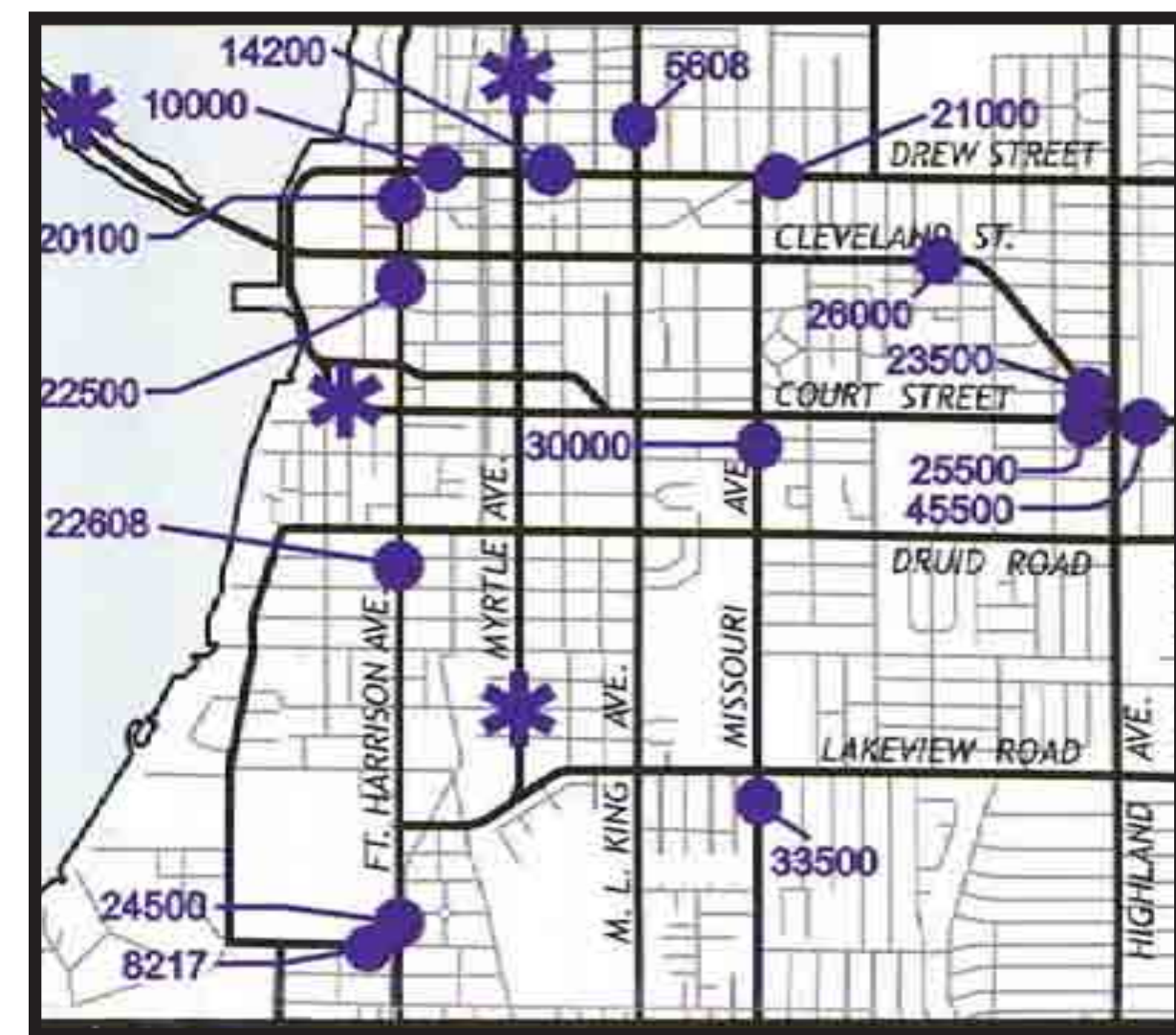
Mobile Retail



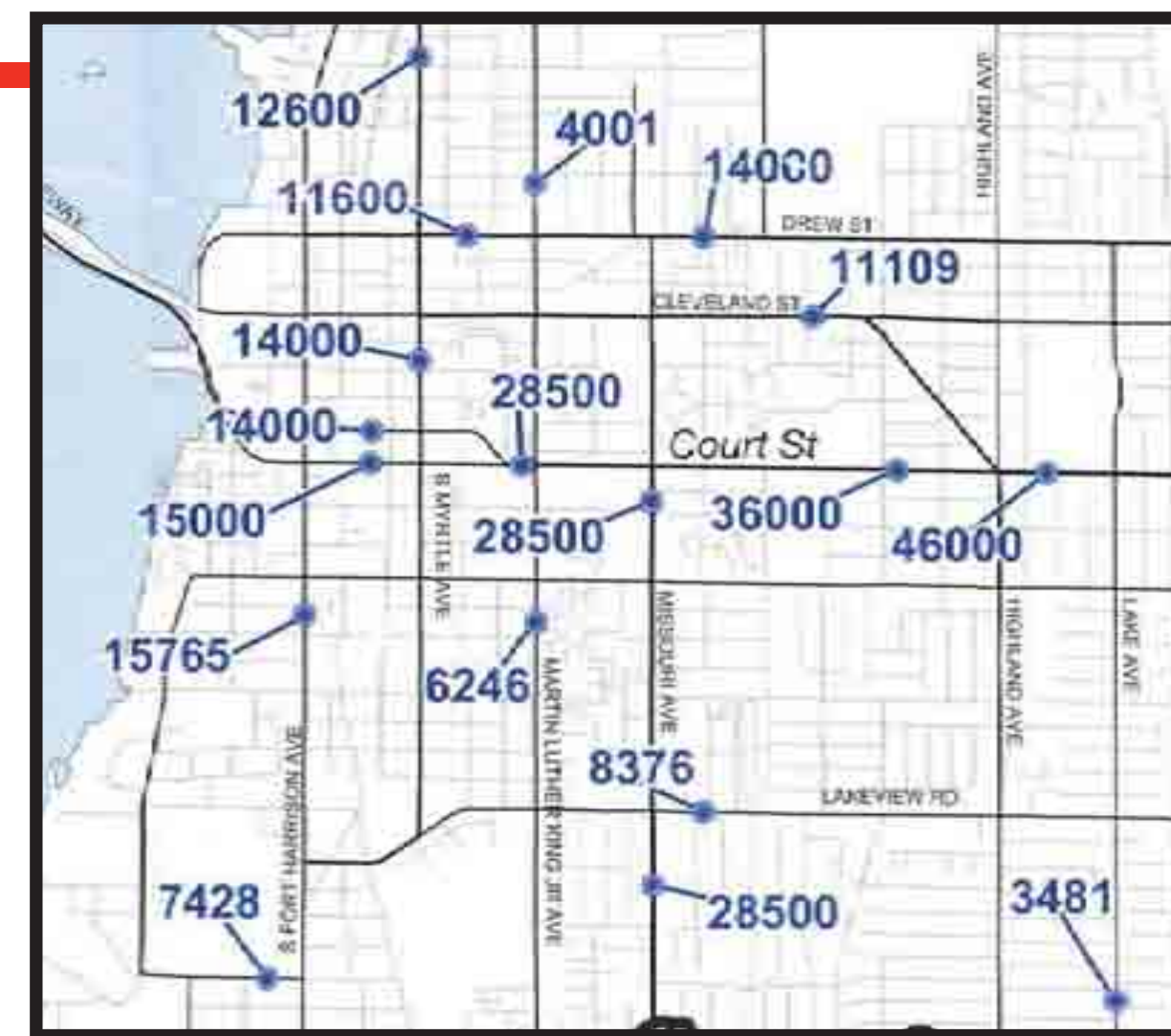
District Development Diagram



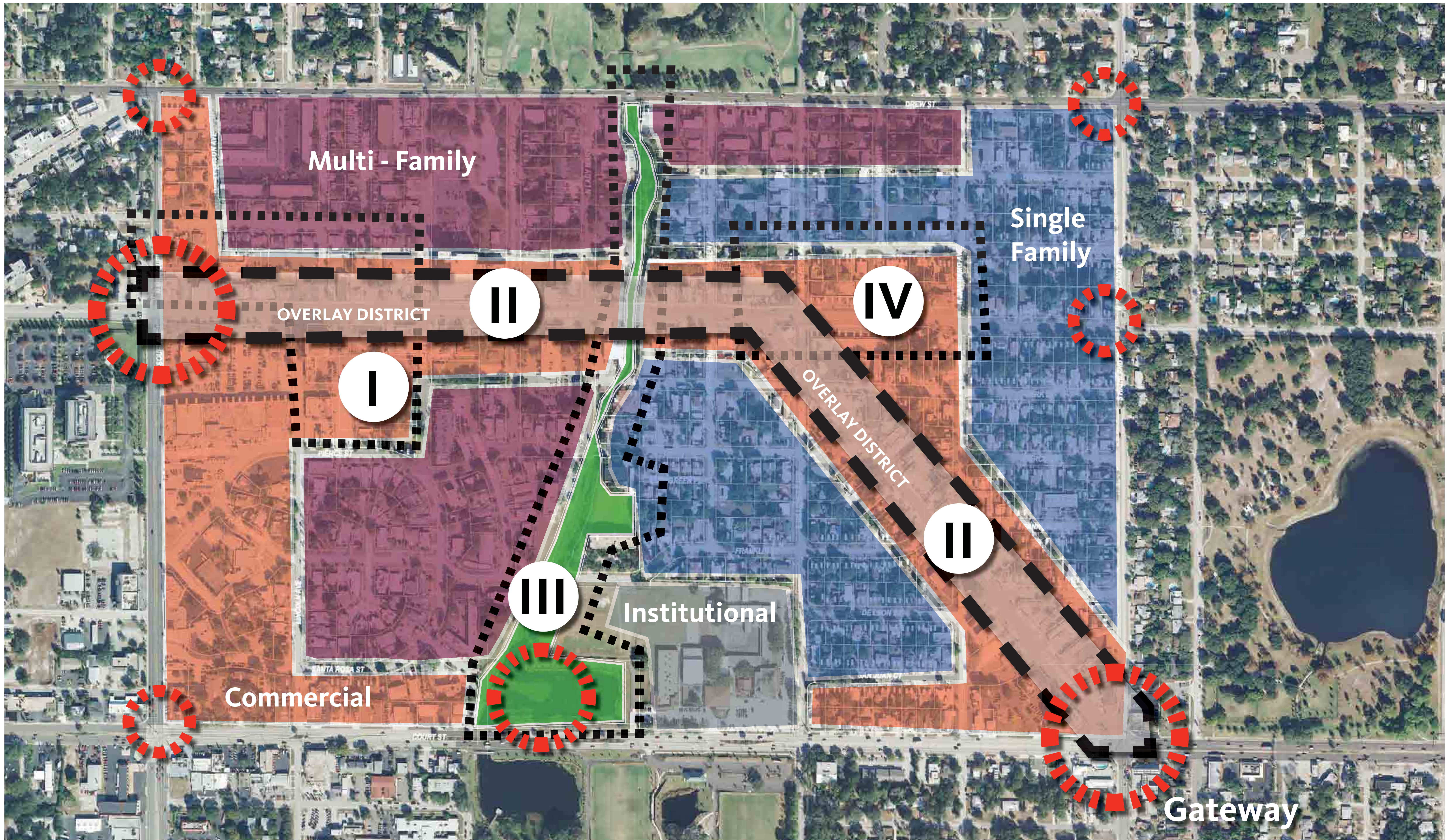
Streetscape Detail



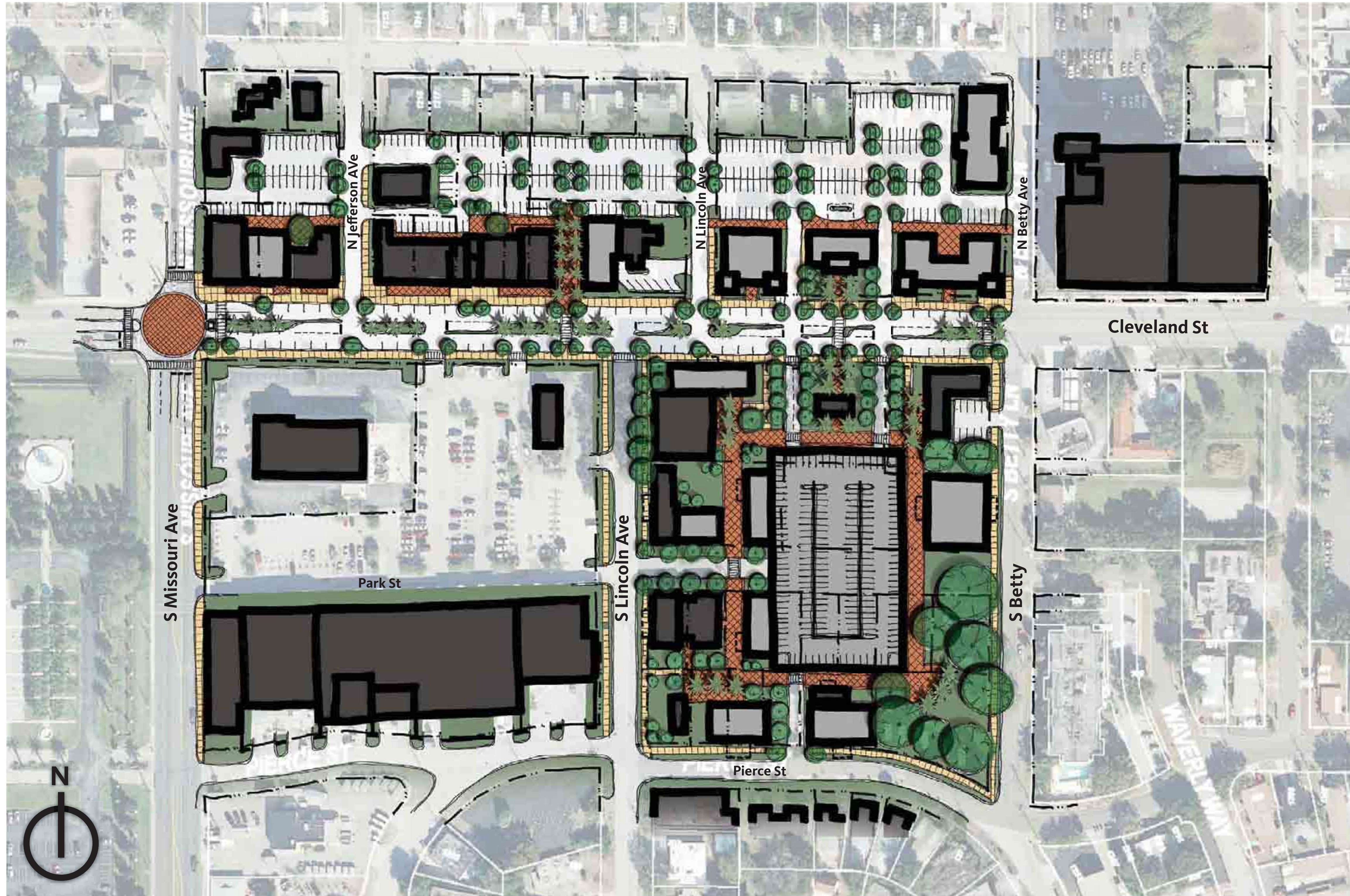
2005 Traffic Volume



2010 Traffic Volume



District Development Diagram

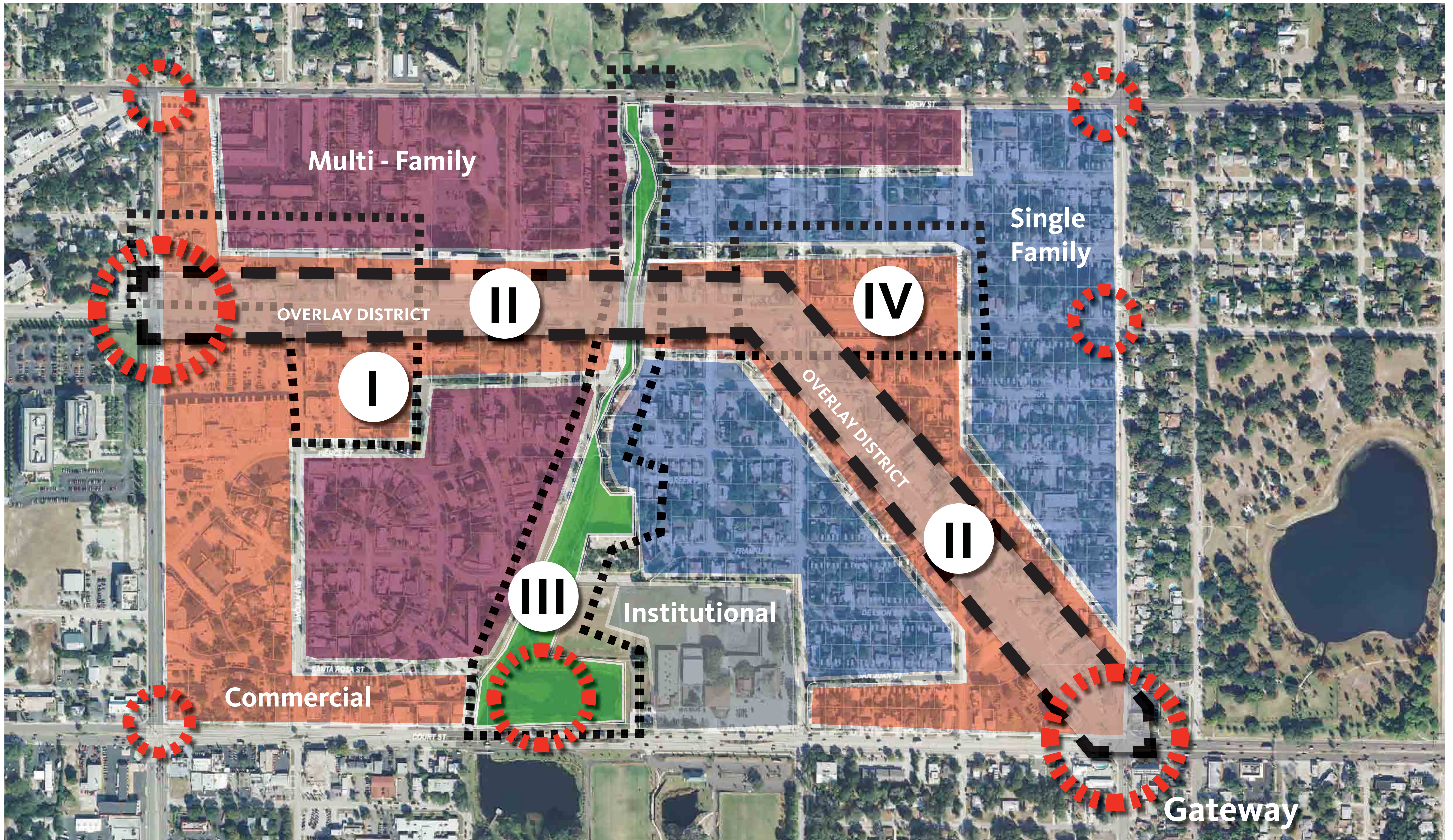


Development Zone I - West Gateway

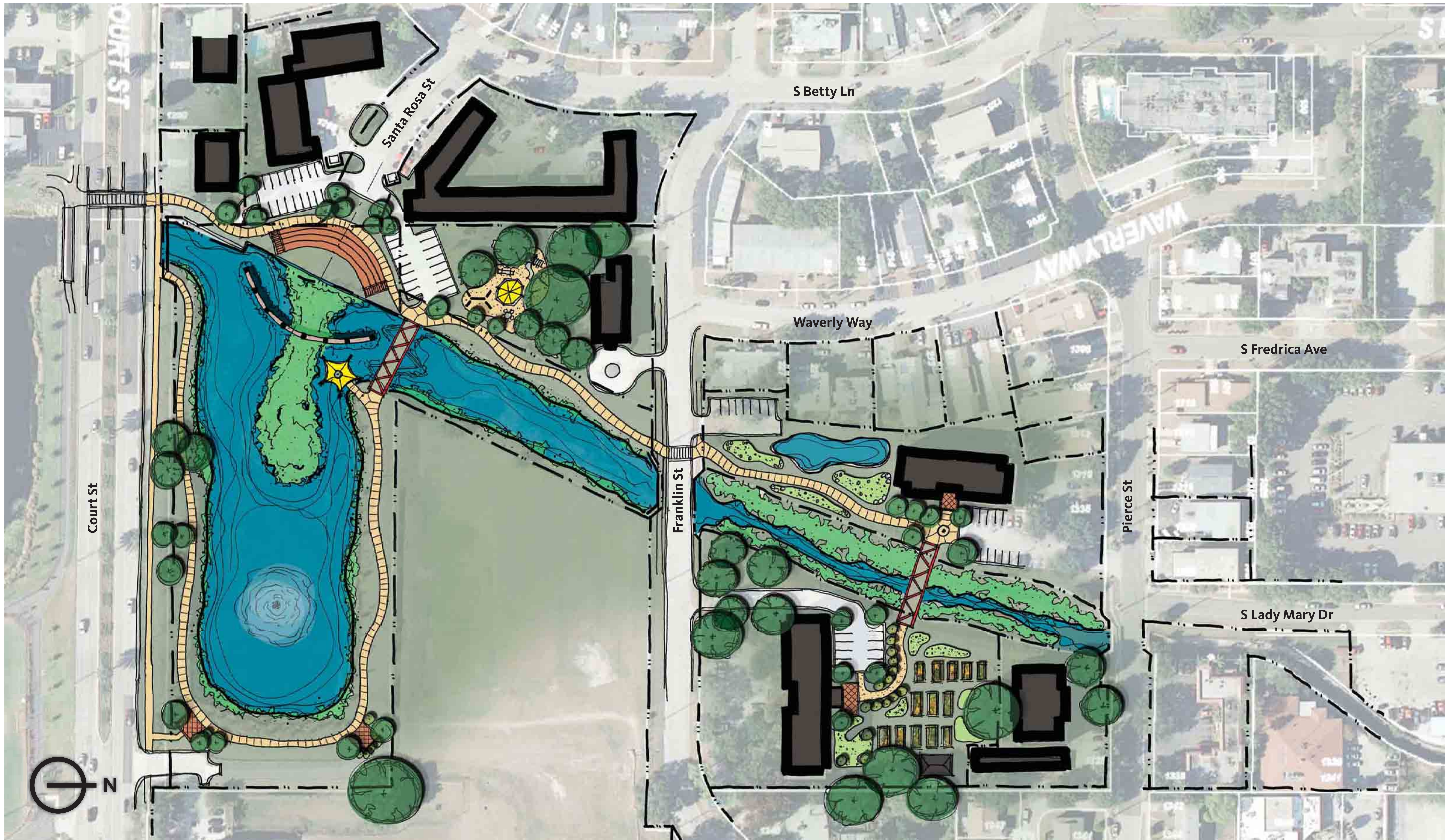
City of Clearwater | East Gateway District

Clearwater, FL | September, 2011 | ©2011 Gensler. All rights reserved.





District Development Diagram



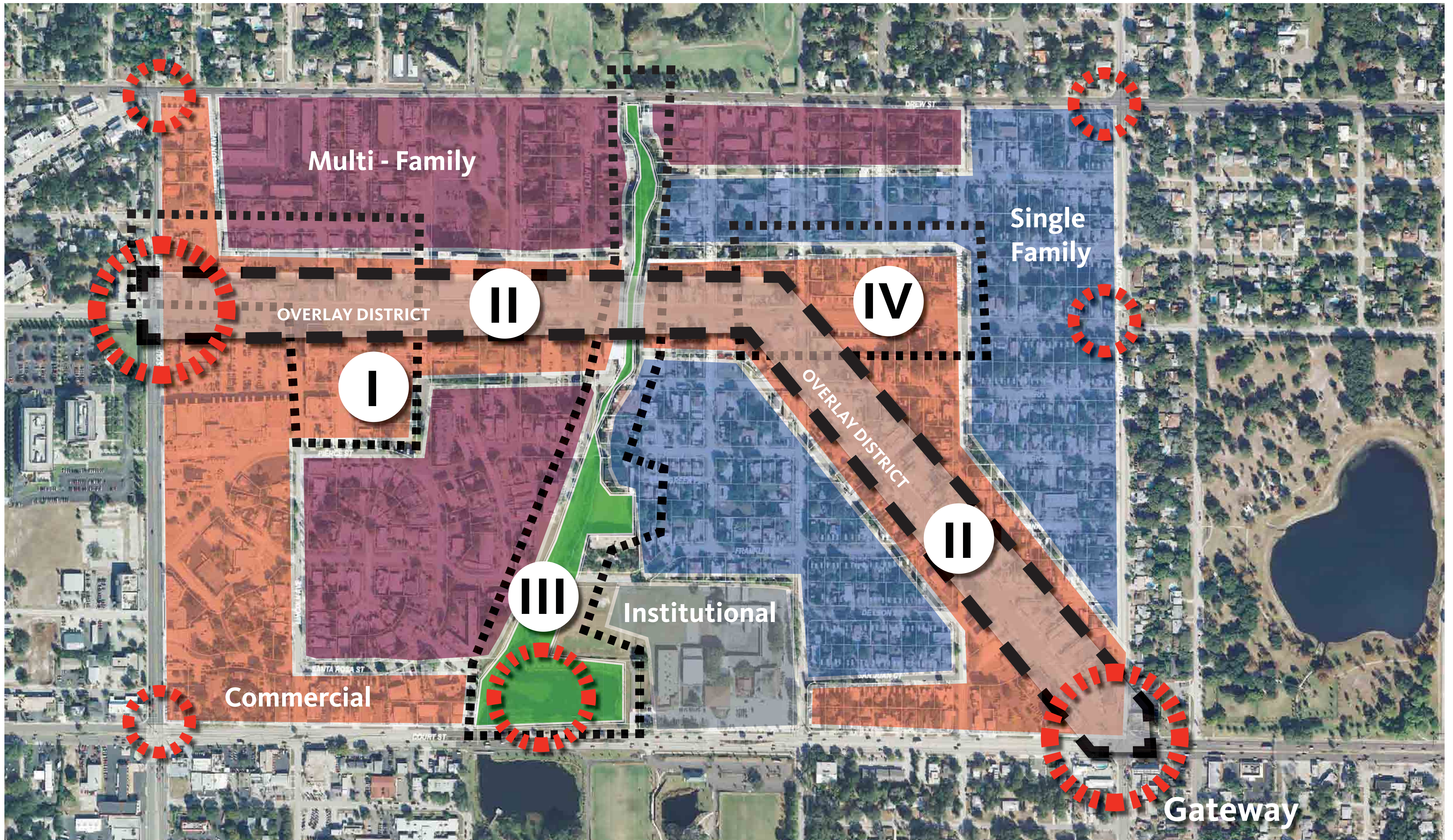
Development Zone III - Open Space

City of Clearwater | East Gateway District

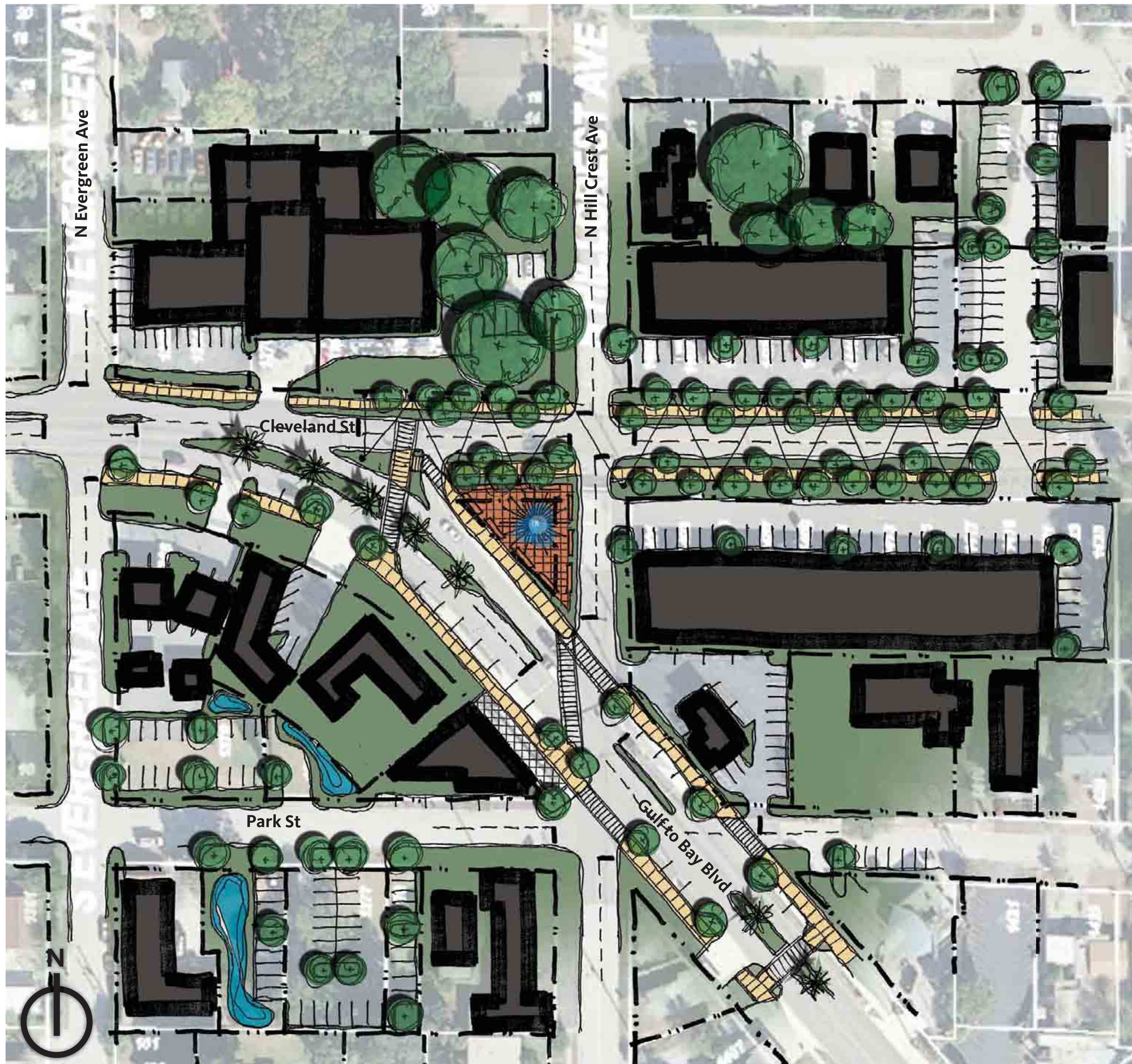
Clearwater, FL | September, 2011 | ©2011 Gensler. All rights reserved.

Gensler





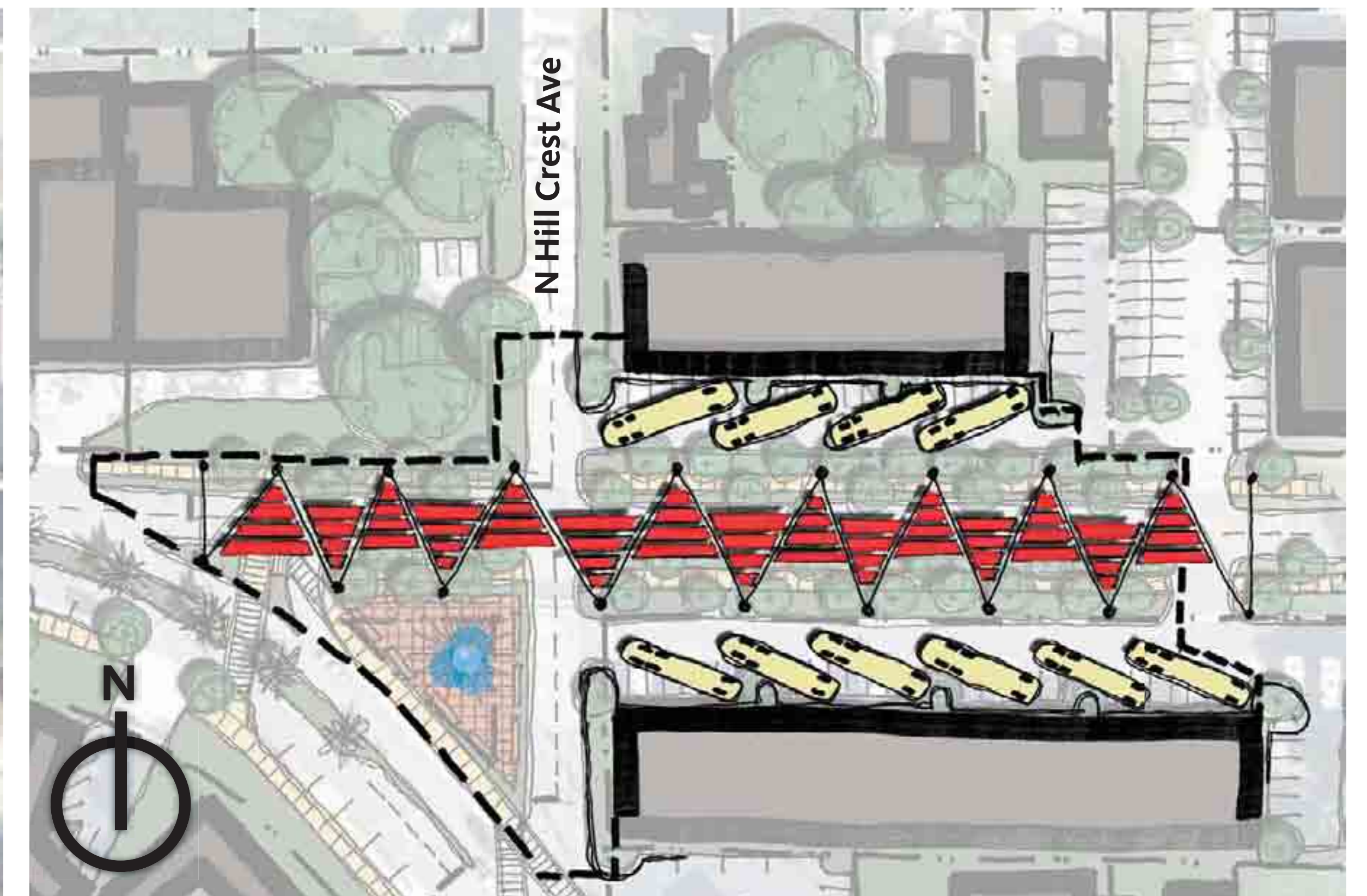
District Development Diagram



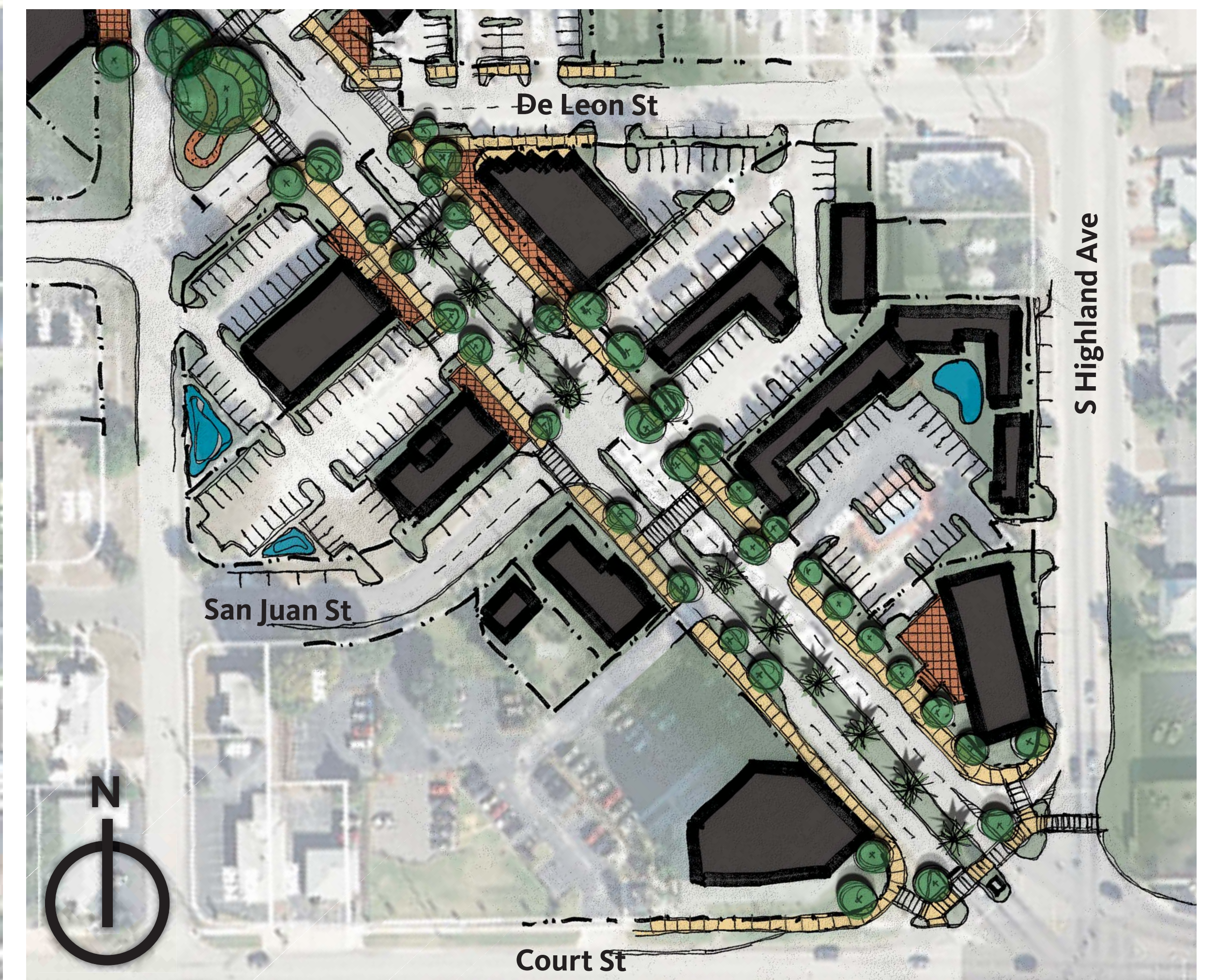
Festival Zone - East Gateway

Development Zone IV - Festival Core

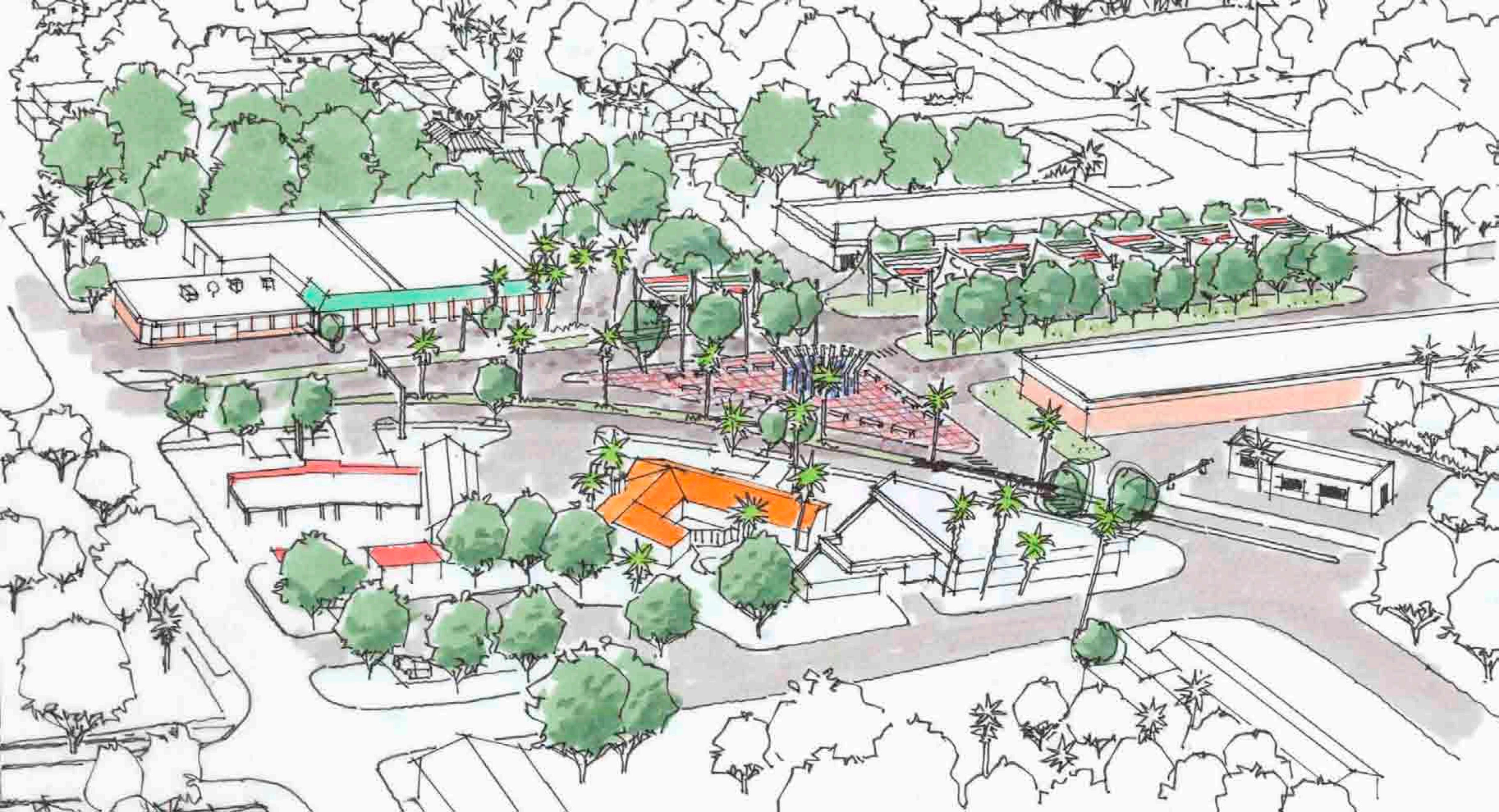
City of Clearwater | East Gateway District

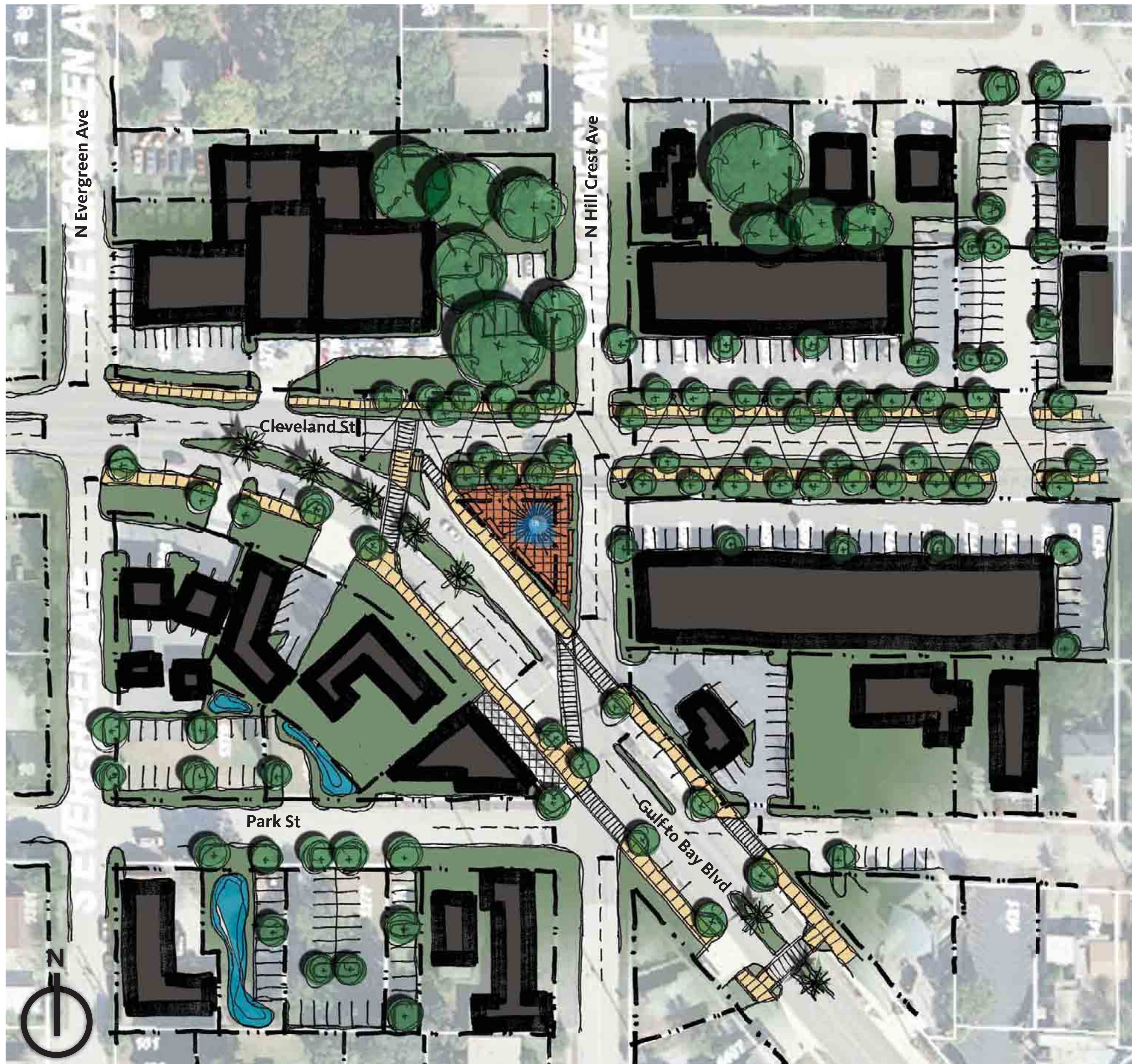


Festival Zone - 1.7 Acre



Development Zone II - East Gateway - Gulf to Bay Blvd

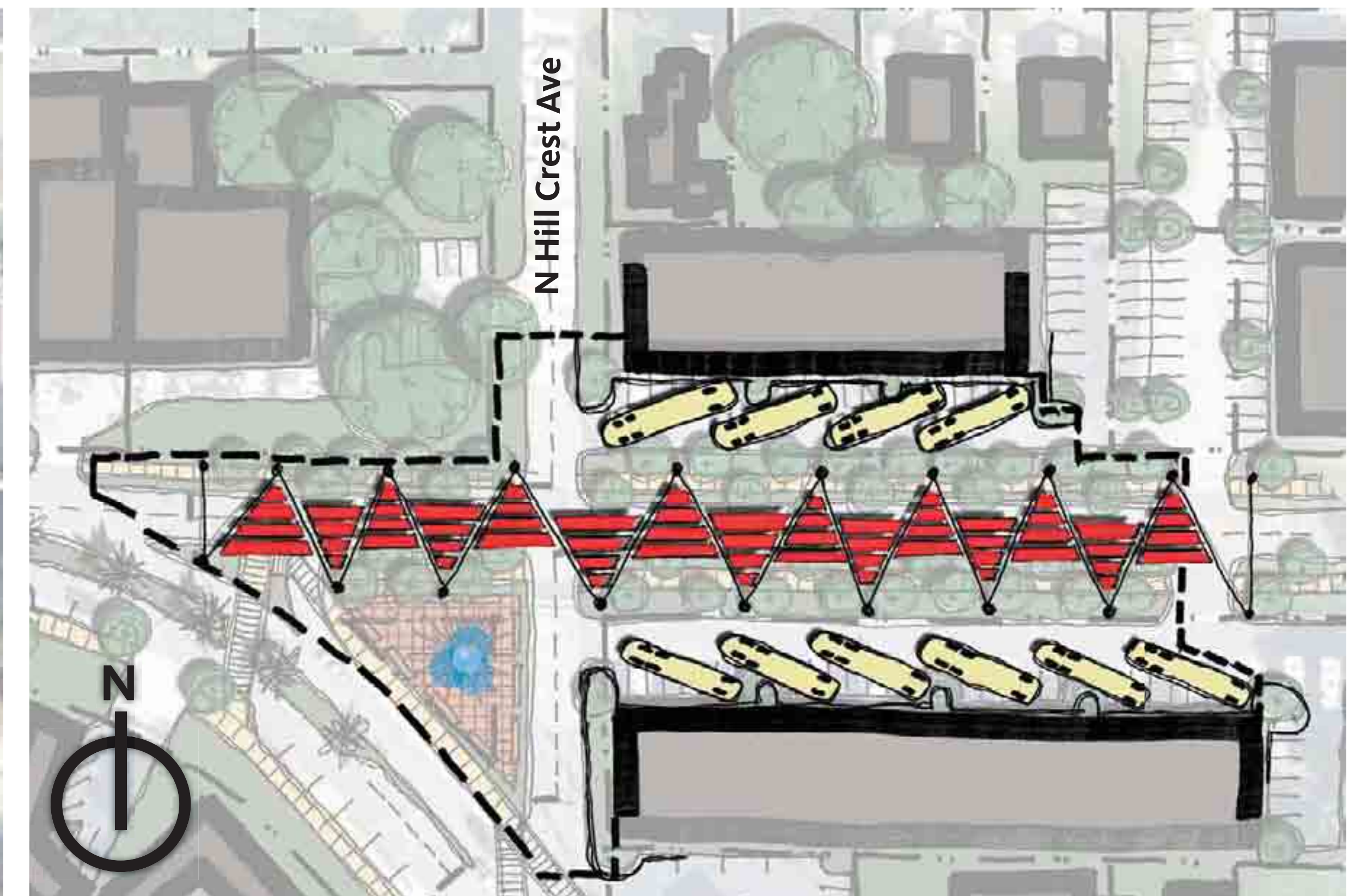




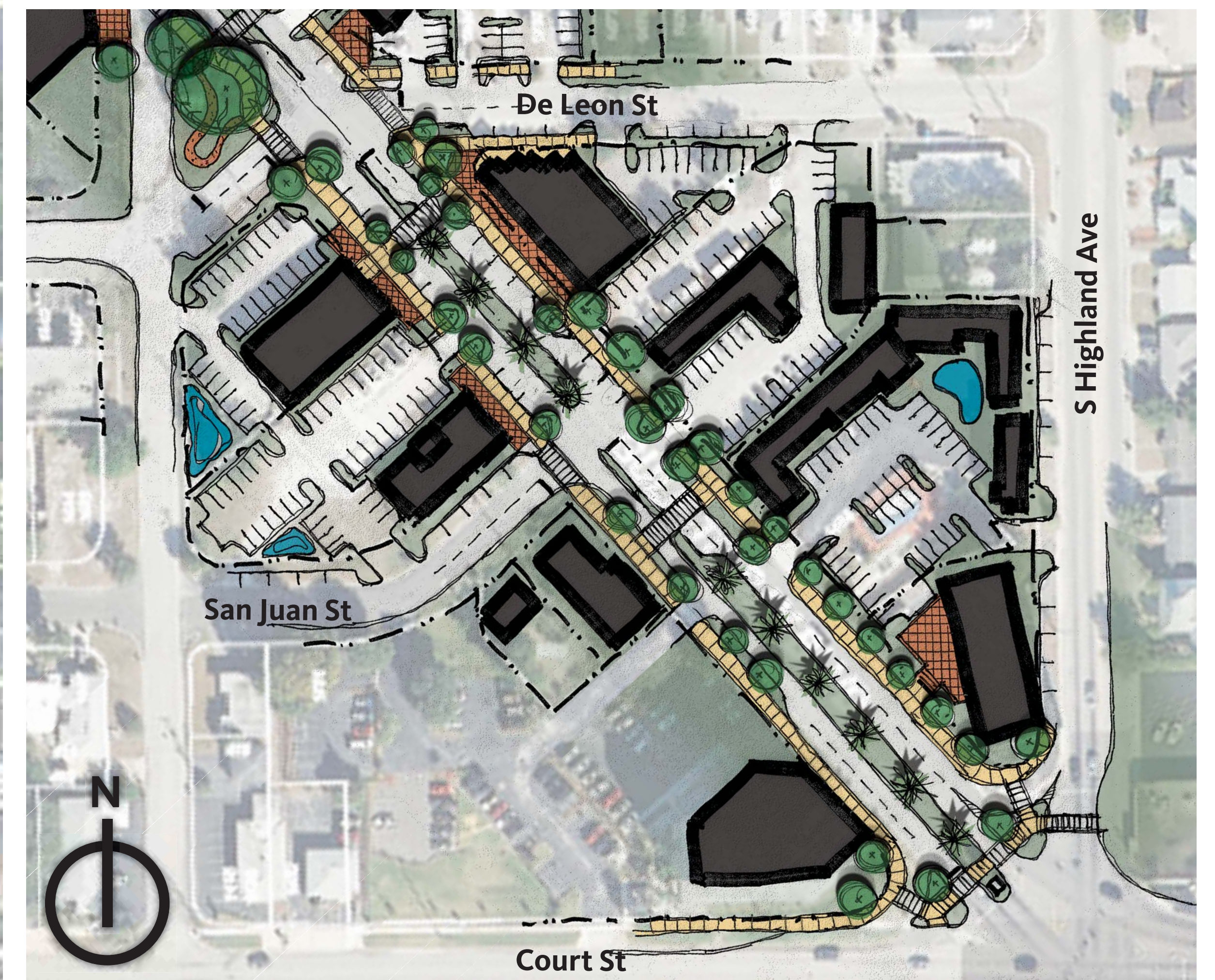
Festival Zone - East Gateway

Development Zone IV - Festival Core

City of Clearwater | East Gateway District

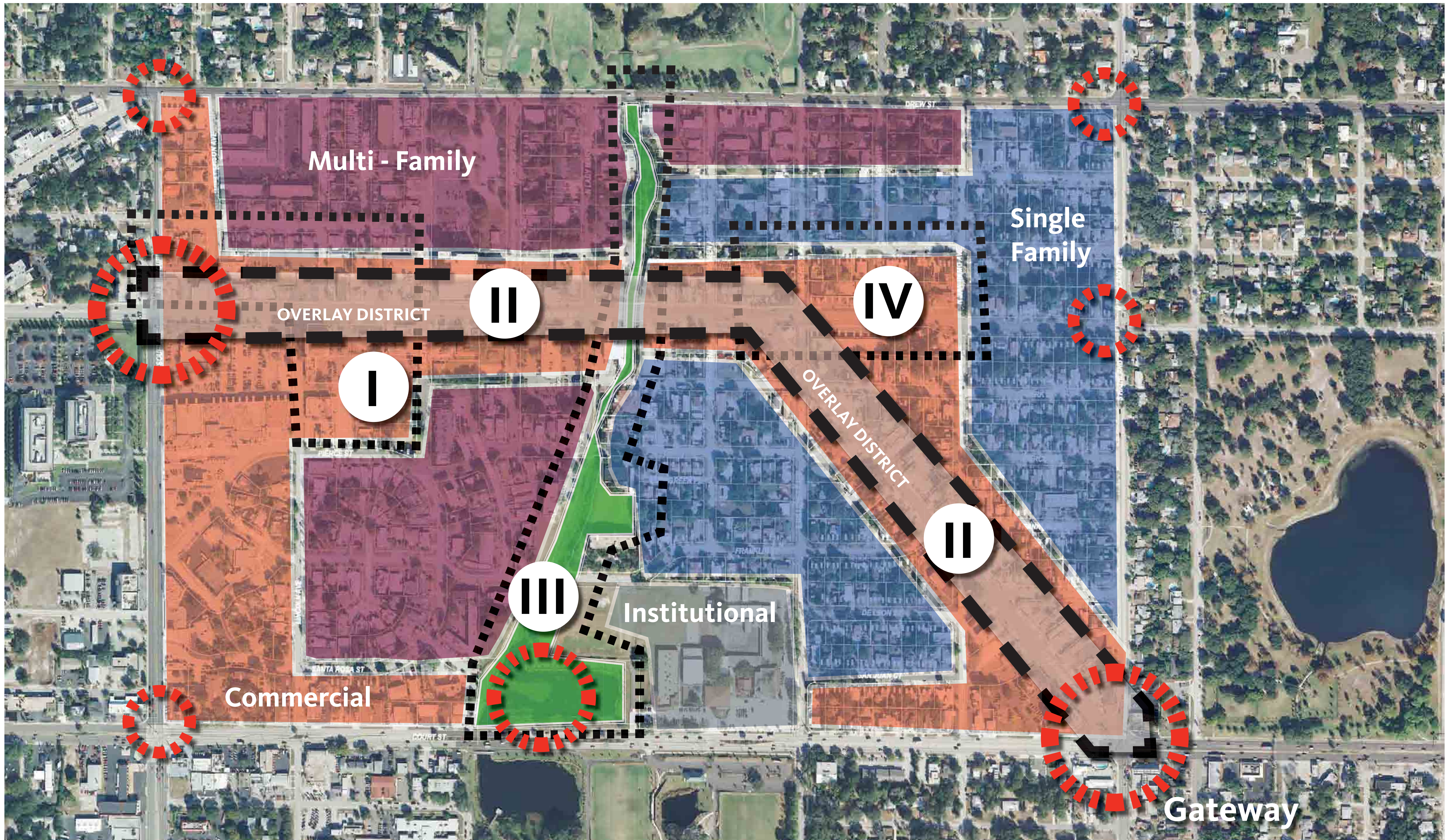


Festival Zone - 1.7 Acre



Development Zone II - East Gateway - Gulf to Bay Blvd





District Development Diagram





